

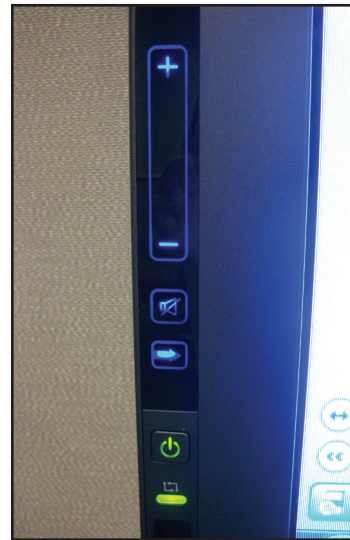
SMART Board[®] with Appliance Basics

This guide provides the information you need to use a SMART Board[®] interactive whiteboard system with an appliance.

The SMART Appliance 1.0 is a stand alone hardware device that comes with SMART Meeting Pro[®] and Microsoft[®] Internet Explorer[®] programs pre-installed. These programs can be accessed through the interactive display or with the control panel.


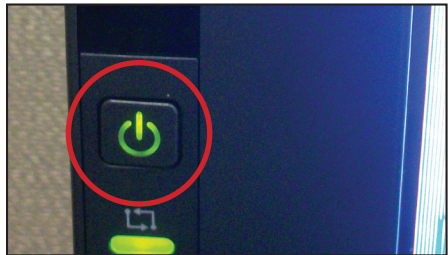


SMART Board 885ixe interactive whiteboard system appliance control panel (ACP)



SMART Board 8070ie interactive display integrated control panel (ICP)

Getting started

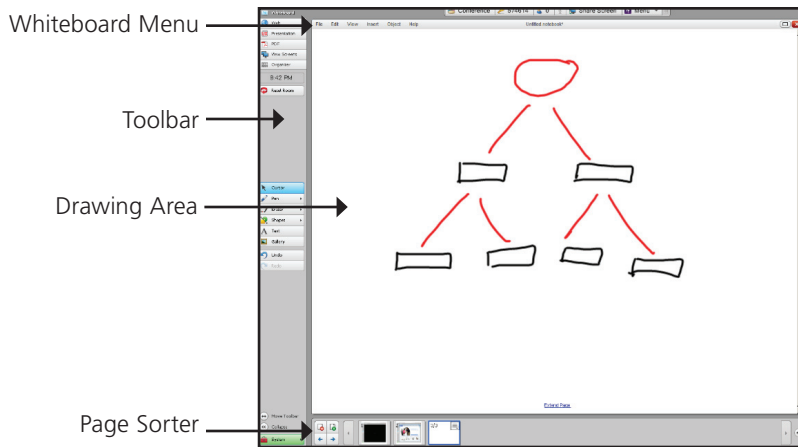
	SMART Board 885ixe/885ie/880ie interactive whiteboard system	SMART Board 8070ie interactive display
To turn on the interactive whiteboard:	<ul style="list-style-type: none"> Press the Power button on the ACP to the left of the pen tray. 	<ul style="list-style-type: none"> Press the Power button on the ICP to the left of the color select module. 

Getting started

	SMART Board 885ixe/885ie/880ie interactive whiteboard system	SMART Board 8070ie interactive display
<p>To orient the interactive whiteboard:</p>	<ul style="list-style-type: none"> Press the Orientation button on the pen tray. 	<ul style="list-style-type: none"> Press the Orient button on the color select module. 
<p>To control volume:</p>	<ol style="list-style-type: none"> Press the arrow on the ACP LCD screen to locate the Volume button. Press the high or low buttons to increase or decrease the volume. 	<ul style="list-style-type: none"> Press the plus or minus buttons on the ICP to increase or decrease the volume. 
<p>To select a video source:</p>	<ul style="list-style-type: none"> Press the arrow on the ACP LCD screen to locate the button for the video input you want to use (e.g., S-video, HDMI or Laptop). <div style="display: flex; justify-content: space-around; align-items: center;"> <div style="text-align: center;">  <p>S-video</p> </div> <div style="text-align: center;">  <p>HDMI</p> </div> <div style="text-align: center;">  <p>Laptop</p> </div> </div> <p>TIP: Press the Whiteboard button on the ACP LCD screen to return to SMART Meeting Pro Premium software.</p> 	<ul style="list-style-type: none"> Press the Input button on the ICP to switch between video inputs (e.g., S-video, HDMI or Laptop). 

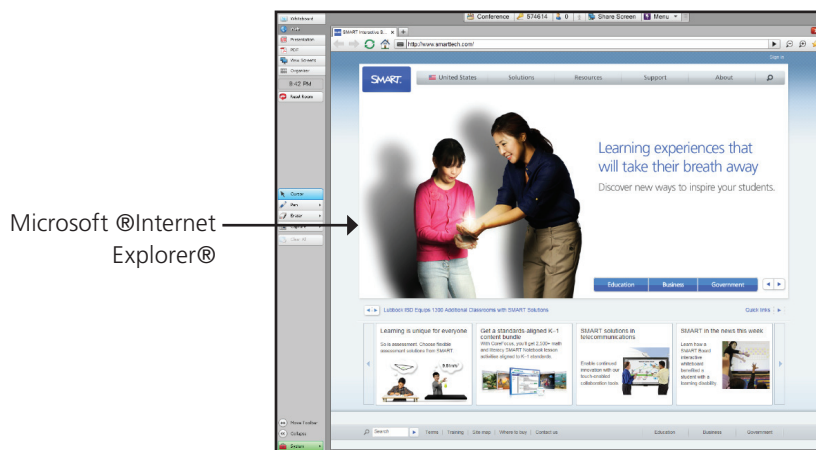
Brainstorming

SMART Meeting Pro software starts automatically when you turn on the interactive whiteboard. SMART Meeting Pro starts in either Whiteboard or Web mode.



Whiteboard mode in SMART Meeting Pro

Use Whiteboard mode for brainstorming, note taking and other activities that involve your SMART product's digital ink tools.

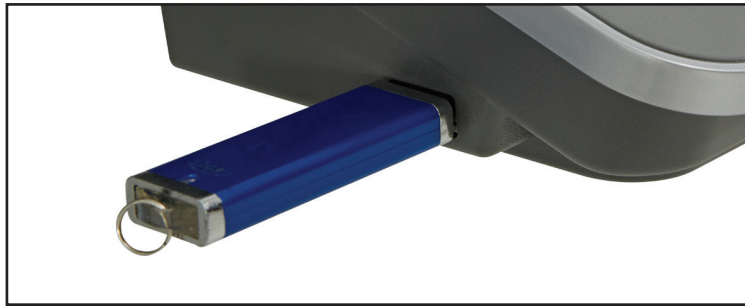


Web mode in SMART Meeting Pro

Use Web mode for browsing the Internet, working with web applications, writing notes on web pages and taking screen captures. Microsoft® Internet Explorer® and Adobe® Flash® Player files are supported.

Opening and saving meeting files

Use a USB drive to save and access meeting files. There is a USB port on the left side of the ACP on interactive whiteboard systems or behind the ICP on SMART Board 8070ie interactive displays.



To open Whiteboard:

1. Select **File > Open** from the Whiteboard mode menu. The Open dialog box appears.
2. Browse to and select a .notebook
3. Press the **Open** button

To open PDF files:

1. Press the **PDF** button on the SMART Meeting Pro toolbar
2. Press the folder icon
3. Browse to and select a .pdf file
4. Press the **Open** button

To save files:

1. Select **File > Save** from the Whiteboard mode menu. The Save As dialog box appears.
2. Browse to and save the meeting notes file as a .notebook or .pdf file.
3. Press the **Open** button