



3D Tools for SMART Notebook™ 11

User's guide

Product registration

If you register your SMART product, we'll notify you of new features and software upgrades.

Register online at smarttech.com/registration.

Keep the following information available in case you need to contact SMART Support.

Serial number:

Date of purchase:

Trademark notice

SMART Notebook, smarttech, SMART Exchange, the SMART logo and all SMART taglines are trademarks or registered trademarks of SMART Technologies ULC in the U.S. and/or other countries. Google and SketchUp are trademarks of Google Inc. Windows, DirectX and Windows Vista are either registered trademarks or trademarks of Microsoft Corporation in the U.S. and/or other countries. All other third-party product and company names may be trademarks of their respective owners.

Copyright notice

© 2012 SMART Technologies ULC. All rights reserved. No part of this publication may be reproduced, transmitted, transcribed, stored in a retrieval system or translated into any language in any form by any means without the prior written consent of SMART Technologies ULC. Information in this manual is subject to change without notice and does not represent a commitment on the part of SMART.

This product and/or use thereof covered by one or more of the following U.S. patents.

www.smarttech.com/patents

10/2012

Contents

| | |
|---|-----------|
| Chapter 1: Using 3D Tools for SMART Notebook software | 1 |
| Activating 3D Tools for SMART Notebook software | 1 |
| Incorporating 3D content into your lessons | 2 |
| Getting started | 2 |
| Chapter 2: Inserting and manipulating 3D models | 3 |
| Inserting 3D models | 3 |
| Manipulating 3D models | 4 |
| Navigating 3D scenes | 7 |
| Disguising 3D models before presenting them | 10 |
| Chapter 3: Using SketchUp sketching software and Google 3D Warehouse | 13 |
| Using SketchUp sketching software | 13 |
| Using Google 3D Warehouse | 14 |
| Index | 15 |

Chapter 1

Using 3D Tools for SMART Notebook software

| | |
|---|---|
| Activating 3D Tools for SMART Notebook software | 1 |
| Incorporating 3D content into your lessons | 2 |
| Getting started | 2 |

3D Tools for SMART Notebook™ software plug-in for SMART Notebook™ collaborative learning software provides in-depth visual representations that can be manipulated across three dimensions to increase student engagement, leading to deeper understanding and appreciation of complex concepts.

This user's guide provides the information you need to begin using 3D Tools for SMART Notebook software as well as SketchUp™ sketching software and Google™ 3D Warehouse.

Activating 3D Tools for SMART Notebook software

■ To activate 3D Tools for SMART Notebook software

1. For Windows® operating systems, select **Start > All Programs > SMART Technologies > SMART Tools > SMART Product Update**.

For Mac OS X operating system software, browse to and double-click **Applications\SMART Technologies\SMART Tools\SMART Product Update**.

The *SMART Product Update* window appears.

2. Click **Activate** in the *SMART Notebook* row.

The *SMART Software Activation* dialog box appears.

3. Click **Add**.

4. Type the product key you received from SMART in the *Product Key* box, and then click **Add**.

CHAPTER 1

Using 3D Tools for SMART Notebook software

5. Click **license agreement**, review the license agreement, and then click **Close**.
6. If you accept the license agreement, select the **I accept the terms in the license agreement** check box.
7. Click **Next**.
3D Tools for SMART Notebook software activates.
8. Click **Finish**, and then close the *SMART Product Update* window.

Incorporating 3D content into your lessons

You can incorporate 3D content into your SMART Notebook software lessons. The following are examples of how to do this:

- If you're teaching a biology lesson, insert a 3D model of a heart into your .notebook file. Rotate and change the size of the 3D model to present the different parts of the heart.
- If you're teaching an English lesson, insert a 3D model of a city that is referenced in a novel the class is reading. Enter the 3D scene to navigate streets and interiors of buildings.
- If you're teaching a primary lesson, insert multiple 3D models and use the *Disguise* feature to reveal answers as a memory exercise.

Getting started

To get started with 3D Tools for SMART Notebook software, you need to have SMART Notebook software on a computer that meets the requirements specified in the *SMART Notebook software release notes* (smarttech.com/kb/170144).

Chapter 2

Inserting and manipulating 3D models

| | |
|---|----|
| Inserting 3D models | 3 |
| Manipulating 3D models | 4 |
| Rotating a 3D model | 5 |
| Pausing, playing and restarting animation | 5 |
| Adding labels | 6 |
| Navigating 3D scenes | 7 |
| Disguising 3D models before presenting them | 10 |

To use 3D Tools for SMART Notebook software, you need to insert a 3D model in your .notebook file. After you insert a 3D model, you can manipulate it in the same way you manipulate other objects in SMART Notebook software.

NOTE

You can insert 2D images and 3D models on the same page and manipulate them the same way you manipulate other objects in SMART Notebook software.

Inserting 3D models

3D models are available from the **3D Objects** folder in Lesson Activity Examples and the SMART Exchange™ website (exchange.smarttech.com) as well as the Google 3D Warehouse (see *Using Google 3D Warehouse* on page 14). You can also insert your own 3D models if they are in one of the following formats:

- COLLADA (.dae)
- 3D Object (.obj)
- FBX (.fbx)

CHAPTER 2

Inserting and manipulating 3D models

NOTE

Textures and other information for some 3D models are stored in separate files and folders. When you insert these 3D models, ensure the 3D model file is located in the correct folder structure with the supporting files and folders.

To insert a 3D model

1. Select **Insert > 3D File**.

The *Insert 3D File* dialog box appears.

2. Browse to and select the 3D model you want to insert.
3. Press **Open**.

The 3D model appears on the page.

Manipulating 3D models

After inserting a 3D model, you can manipulate it in the same way you manipulate other objects in SMART Notebook software. In particular, you can do the following:

- Cut, copy and paste
- Clone
- Move
- Scale
- Lock
- Attach links and sounds
- Add to the Gallery tab

NOTES

- For information on these basic options, see the Help for SMART Notebook software.
- When you add a 3D model to the Gallery tab, it appears in the **3D Objects** category.

In addition to these basic options, you can do the following:

- Rotate the 3D model
- Pause, resume, play and restart animation
- Add labels

CHAPTER 2

Inserting and manipulating 3D models

Rotating a 3D model

You can rotate a 3D model along multiple axes. After rotating a 3D model, you can reset it to its original orientation.

■ To rotate a 3D model along a single axis

1. Select the 3D model.
2. Press and hold one of the side rotation handles.



3. Drag your finger around the center of the 3D model, and then release your finger when done.

■ To rotate a 3D model along multiple axes

1. Select the 3D model.
2. Press and hold the center rotation handle.



3. Drag your finger in the direction you want to rotate the 3D model, and then release your finger when done.

■ To reset a 3D model to its original orientation

1. Select the 3D model.
2. Press the 3D model's menu arrow, and then select **Reset Rotation**.

Pausing, playing and restarting animation

If a 3D model contains animation, you can pause, resume and restart the animation.

i NOTE

If a 3D model doesn't contain animation, the *Animation* menu documented in the following procedures is disabled.

■ To pause animation

1. Select the 3D model.
2. Press the 3D model's menu arrow, and then select **Animation > Play/Pause Animation**.

CHAPTER 2

Inserting and manipulating 3D models

■ To resume playing animation

1. Select the 3D model.
2. Press the 3D model's menu arrow, and then select **Animation > Play/Pause Animation**.

■ To restart animation

1. Select the 3D model.
2. Press the 3D model's menu arrow, and then select **Animation > Restart Animation**.

Adding labels

You can use labels to highlight different components of a 3D model. Labels can be text, shapes or other 2D objects.

■ To add a label

1. Select the 3D model.
2. Right-click the 3D model where you want to connect the label, and then select **Add Label**.

A label appears.

3. To use text in the label, double-click the label's default text and then type your own text.

OR

To use a shape or other 2D object in the label, create the object and then drag it into the label.

4. Optionally, drag the label's connection point to a different location on the 3D model.

■ To hide and display a label

1. Press the label's connection point on the 3D model.



The label is hidden.


2. Press the label's connection point to display the label.



CHAPTER 2

Inserting and manipulating 3D models

To remove a label

1. Select the label.
2. Press **Close** .

Navigating 3D scenes

Large 3D models that contain internal details are called 3D scenes. You can navigate 3D scenes using controls in SMART Notebook software.

NOTES

- You can use the navigation controls to navigate any 3D model. However, not all 3D models contain internal details. If you enter a 3D model that doesn't contain internal details, the interior appears empty or dark.
- If you're using Mac OS X operating system software, you're unable to enter a 3D scene while in Full Screen mode. To enter a 3D scene, first exit Full Screen mode and then complete the following procedure.

CHAPTER 2

Inserting and manipulating 3D models

To navigate a 3D scene

1. Select a 3D model.
2. Press the 3D model's menu arrow, and then select **Enter 3D Scene**.

SMART Notebook software displays the 3D scene in Full Screen mode. A map of the 3D scene, navigation controls and the Close button appear.



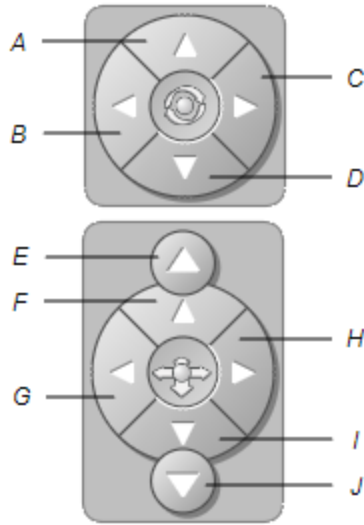
TIPS

- You can press the gray border of the map to drag it to another area of the page if it's covering materials you want to present. You can also resize the map by pressing and dragging the gray border in the lower-right corner.
- You can press the gray background or center icon of a navigation control to drag it to another area of the page if it's covering materials you want to present.

CHAPTER 2

Inserting and manipulating 3D models

3. Navigate the 3D scene using the navigation controls.



| Button | Use to: |
|--------|---------------------------------------|
| A | Change your orientation upward. |
| B | Change your orientation to the left. |
| C | Change your orientation to the right. |
| D | Change your orientation downward. |
| E | Raise elevation. |
| F | Move forward in the scene. |
| G | Move to the left in the scene. |
| H | Move to the right in the scene. |
| I | Move backward in the scene. |
| J | Lower elevation. |

Alternatively, you can use keyboard buttons to navigate the 3D scene.

| Keyboard button | Use to: |
|-----------------|---------------------------------------|
| W | Change your orientation upward. |
| A | Change your orientation to the left. |
| D | Change your orientation to the right. |
| S | Change your orientation downward. |
| PAGE UP | Raise elevation. |
| UP ARROW | Move forward in the scene. |
| LEFT ARROW | Move to the left in the scene. |
| RIGHT ARROW | Move to the right in the scene. |

CHAPTER 2

Inserting and manipulating 3D models

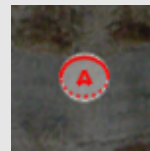
| Keyboard button | Use to: |
|-----------------|-----------------------------|
| DOWN ARROW | Move backward in the scene. |
| PAGE DOWN | Lower elevation. |
| ESC | Close |

NOTE

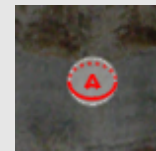
As you navigate the 3D scene, a red indicator in the map displays where you are in the scene and the direction you are viewing. The arrow in the center indicates orientation. The arrow becomes a circle when you're facing directly up or down.



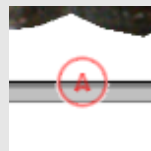
Level



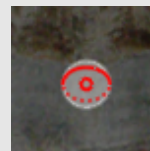
Incline



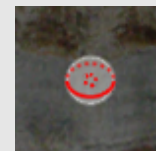
Decline



Off-screen (level)



Upward



Downward

4. Press **Close**  when you're done.

Disguising 3D models before presenting them

If you want to hide 3D models in your .notebook file before presenting them, you can use the Disguise feature to hide the 3D models with a magic hat.

NOTE

If you hide multiple 3D models on the same page with magic hats, each magic hat has a different colored ribbon.

To hide a 3D model with a magic hat

1. Select the 3D model.
2. Press the 3D model's menu arrow, and then select **Disguise > Disguised**.


CHAPTER 2

Inserting and manipulating 3D models

■ To change the magic hat's color

1. Select the magic hat.
2. Press the magic hat's menu arrow, and then select **Disguise > Change Color**.

■ To reveal a 3D model under a magic hat

Press the hat  icon in the lower-left corner.

Chapter 3

Using SketchUp sketching software and Google 3D Warehouse

| | |
|---|----|
| Using SketchUp sketching software | 13 |
| Using Google 3D Warehouse | 14 |

Google offers two 3D tools that you can use with 3D Tools for SMART Notebook software:

- SketchUp sketching software
- Google 3D Warehouse

Using SketchUp sketching software

You can use SketchUp sketching software to create 3D models. You can save these 3D models in COLLADA (.dae) format and then insert them in SMART Notebook software.

■ To save a 3D model in .dae format

1. Open the 3D model in SketchUp sketching software.
2. Select **File > Export > 3D Model**.
The *Export Model* dialog box appears.
3. Browse to where you want to save the file.
4. Type a name for the file in the *File name* box.
5. Select **COLLADA File (*.dae)** in the *Export type* drop-down list.
6. Press **Export**.

■ To insert the 3D model in SMART Notebook software

See *Inserting 3D models* on page 3.

Using Google 3D Warehouse

Google 3D Warehouse is an online repository of 3D models. The Gallery tab in SMART Notebook software includes a link to Google 3D Warehouse. Using this link, you can search for 3D models and download them to your computer. You can then insert the 3D models into your .notebook files.

■ To download 3D models from Google 3D Warehouse

1. Press the **Gallery**  tab.

2. Press **Google 3D Warehouse**.

Google 3D Warehouse appears in the bottom section of the Gallery tab.

3. Search or browse for a 3D model that you want to download.

Select the model.

4. Press **Download Model**, and then press the **Download** link beside *Collada (.zip)*.

NOTES

- When you first download a 3D model, Google 3D Warehouse could prompt you for a nickname.
- If you're using Mac OS X operating system software and you cancel the download, the 3D model still saves to the **Downloads** folder.

5. Save the .zip file to your computer.
6. Extract the contents of the .zip file to a folder on your computer.

■ To insert a 3D model downloaded from Google 3D Warehouse

See *Inserting 3D models* on page 3.

Index

3

- 3D models
 - disguising 10
 - inserting 3
 - manipulating 4
 - revealing 11
 - rotating 5
 - textures 4
- 3D Object files 3
- 3D scenes 7
 - map 10

A

- activation 1
- animation 5
 - pausing 5
 - playing 6
 - restarting 6

B

- button
 - navigation control 9

C

- COLLADA files 3, 13-14

D

- DAE files 3, 13-14
- disguises 10

F

- FBX files 3

G

- Gallery 4
- Google 3D Warehouse 13-14
 - downloading 14
- Google SketchUp 13

K

- keyboard controls 9

L

- labels 6
 - adding 6
 - removing 7

M

- magic hats 10
 - changing color 11

N

- navigation controls 9

O

- OBJ files 3

INDEX

S

scenes 7

SketchUp sketching software 13

SMART Notebook 3D Tools 1

SMART Notebook software 1

W

Warehouse 14

SMART Technologies

smarttech.com/support

smarttech.com/contactsupport