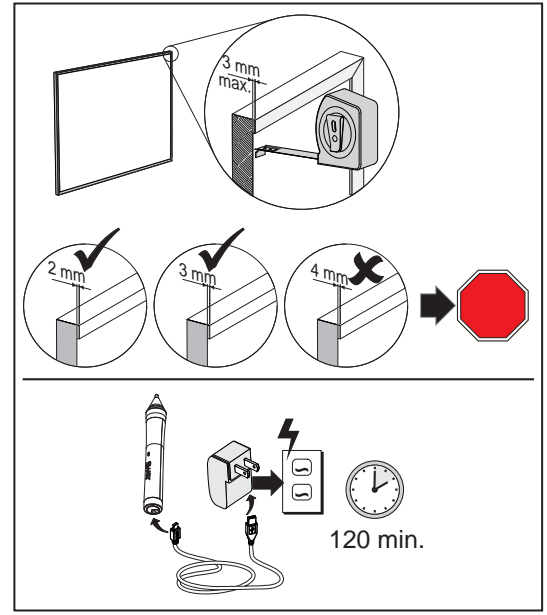
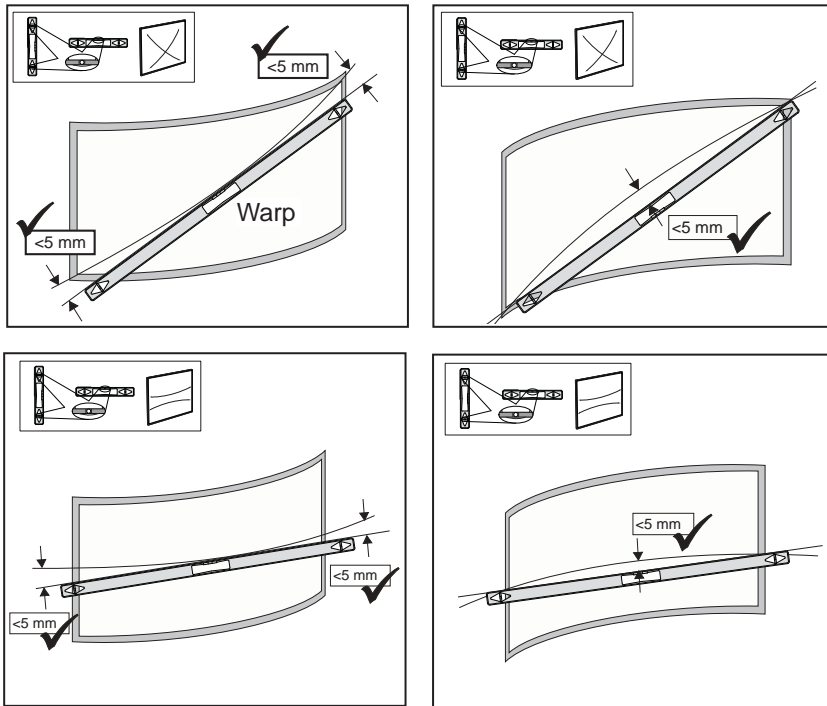


LightRaise™ interactive projector quick connect guide

For more detailed instructions, see the LightRaise interactive projector textless installation guide included with your projector or download it at smarttech.com/kb/170259.

1. Surface selection



2. Projector mounting

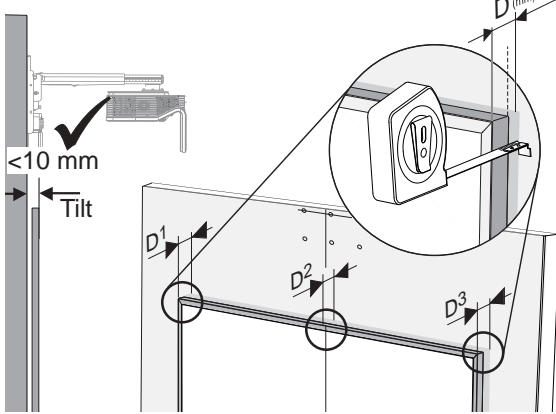


Table 1

D max. (mm)	# of shims	# of spacers	Indicator setting
0-6	0	0	3
7-12	0	0	9
13-19	0	0	16
20-26	1	0	10
27-33	0	1	10
34-39	0	1	16
40-46	1	1	10
47-52	0	2	9
53-60	0	2	16

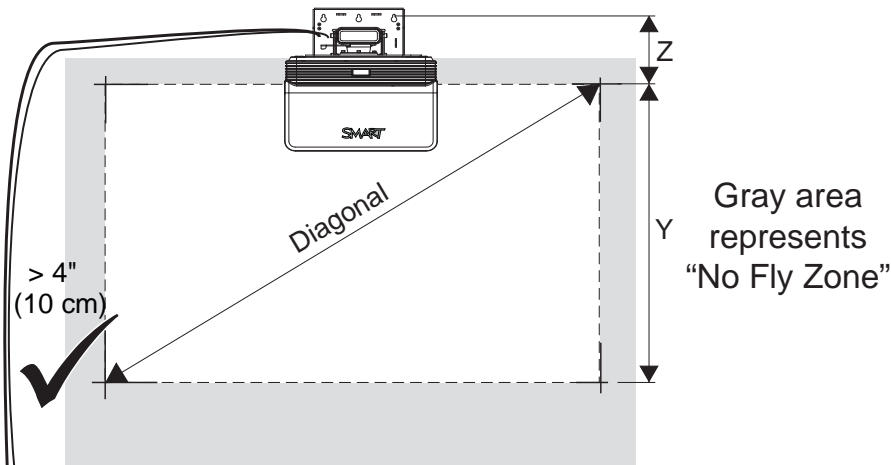


Table 2

Diagonal	Y (image height)	Z (plate height)
67" (170 cm)	35"-36" (89 cm-91.5 cm)	14 1/2" (37 cm)
68" (173 cm)	36"-37" (91.5 cm-94 cm)	14 1/2" (37 cm)
70" (178 cm)	37"-38" (94 cm-96.5 cm)	14 3/4" (37.5 cm)
72" (183 cm)	38"-39" (96.5 cm-99 cm)	15" (38 cm)
74" (188 cm)	39"-40" (99 cm-101.5 cm)	15 1/4" (39 cm)
76" (193 cm)	40"-41" (101.5 cm-104 cm)	15 1/2" (39.5 cm)
78" (198 cm)	41"-42" (104 cm-107 cm)	15 3/4" (40 cm)
80" (203 cm)	42"-43" (107 cm-109 cm)	16" (40.5 cm)
82" (208 cm)	43"-44" (109 cm-112 cm)	16 1/4" (41 cm)
84" (213.5 cm)	44"-45" (112 cm-114 cm)	16 1/4" (41 cm)
86" (218.5 cm)	45"-46" (114 cm-117 cm)	16 1/2" (42 cm)
88" (223.5 cm)	46"-47" (117 cm-119.5 cm)	16 3/4" (42.5 cm)
90" (228.5 cm)	47"-48" (119.5 cm-122 cm)	17" (43 cm)
92" (234 cm)	48"-49" (122 cm-124.5 cm)	17 1/4" (44 cm)
94" (239 cm)	49"-50" (124.5 cm-127 cm)	17 1/2" (44.5 cm)
96" (244 cm)	50"-51" (127 cm-129.5 cm)	17 3/4" (45 cm)
98" (249 cm)	51"-52" (129.5 cm-132 cm)	18" (46 cm)
100" (254 cm)	52"-53" (132 cm-134.5 cm)	18 1/4" (46.5 cm)

All dimensions +/- 1/4" (0.5 cm)



LightRaise interactive projector installation checklist

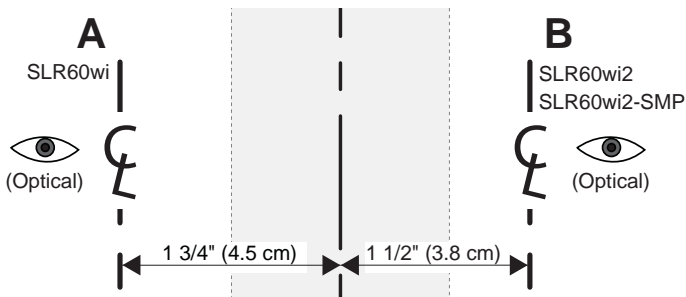
1. Surface selection

Projection surface must meet the guidelines found in the *LightRaise interactive projector surface evaluation guide* (smarttech.com/kb/170402).

- Ensure the image surface warp (horizontal, vertical, diagonal) is less than 5 mm.
- Ensure the top bezel or protrusions don't extend 3 mm above the surface.
- Ensure the projection surface is mounted according to the *LightRaise interactive projector textless installation guide* (smarttech.com/kb/170259).
- Charge a pen for 120 minutes for use in the initial setup and alignment.

2. Projector mounting

- Image surface tilt (horizontal, vertical) is less than 10 mm.
- Record "D" measurement: _____. Ensure the correct number of shims and spacers are selected based on the "D" measurement in Table 1.
- Ensure the mounting plate optical image center line is aligned with the image center. Ensure one set of holes on the mounting plate is secured to at least one stud.



- Secure the projector mounting plate at the position determined by the "Z" measurement.
- Ensure all cables or other obstructions don't cross the "No Fly Zone."
- Complete installation and image adjustment.

3. Initial setup and alignment

- Install SMART software:
 - SLR60wi – minimum SMART Notebook 11.1
 - SLR60wi2 – minimum SMART Notebook 11.4
 - SLR60wi2-SMP – minimum SMART Meeting Pro 4.0
- Click **SMART Board** icon in the Windows® notification area or the Mac Menu bar, and then select **SMART Settings > Connection Wizard**.

- Watch the embedded videos throughout the initial setup and follow the instructions.
- When prompted by the Connection Wizard, enter the number for the boom setting that's located on the right side of the projector boom.
- With the pen turned on, complete the 36-point pen orientation.
- Set the indicator setting on the touch detection module (TDM) (left and right) as determined by Table 1.
- Press the red button to turn the red laser **ON**.
- Use the center dial to adjust the red laser 1 1/2" (35 mm) away from the surface in the target area.
- Press the red button to turn the red laser **OFF**.
- With the alignment tool turned **ON**, trace the projected alignment path. It turns green as you complete each section. Ensure the alignment tool is held correctly as illustrated in the *LightRaise interactive projector textless installation guide* (smarttech.com/kb/170259).
- Adjust dials (left, center, right) according to the prompts.
- Repeat the alignment traces and adjustments according to the prompts (possibly 3–5 times).
- Complete the 9-point finger orientation.
- Record the star rating: _____



Note: If you receive a one-star rating, the TDM turns off, you can use only the pen, and touch is disabled. If you receive a two-star rating, touch works but is highly compromised.

SMART recommends a surface flatness of less than 5 mm. A flatter surface provides a higher star rating.

Table 3

Star rating	Touch	Pen	Surface flatness
1	None	Excellent	>15 mm
2	Poor	Excellent	10–15 mm
3	Good	Excellent	5–10 mm
4	Excellent	Excellent	<5 mm

