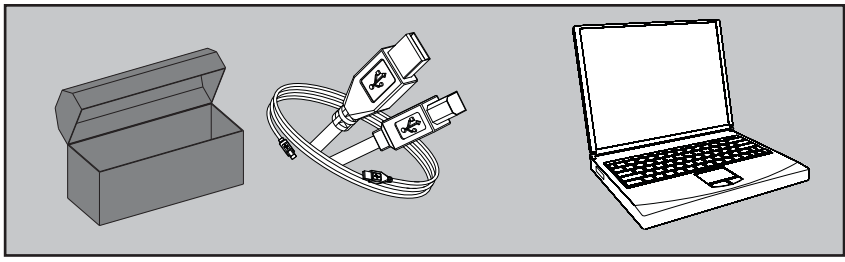
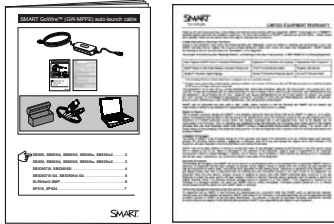
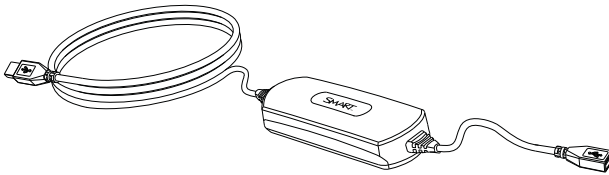
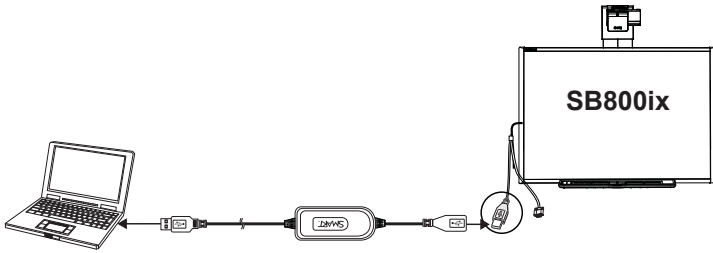
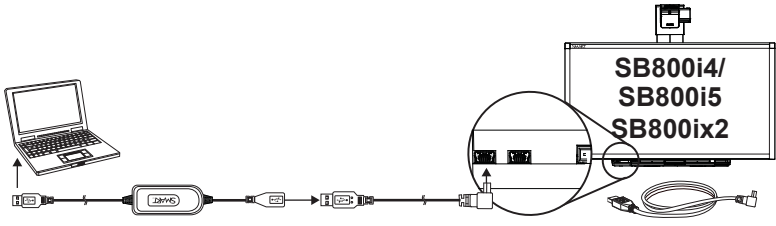
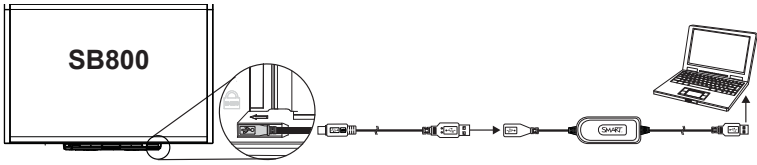


# SMART GoWire™ (GW-MPPE) auto-launch cable



SB800, SB800i4, SB800i5, SB800ix, SB800ix2.....	2
SB600, SB600i4, SB600i5, SB600ix, SB600ix2.....	3
SBID8070i, SBID8055i .....	4
SBID8070i-G4, SBID8084i-G4 .....	5
SLR60wi2-SMP.....	6
SP518, SP524 .....	7

# SB800



**SB800i5-SMP:** [smarttech.com/kb/170158](http://smarttech.com/kb/170158)

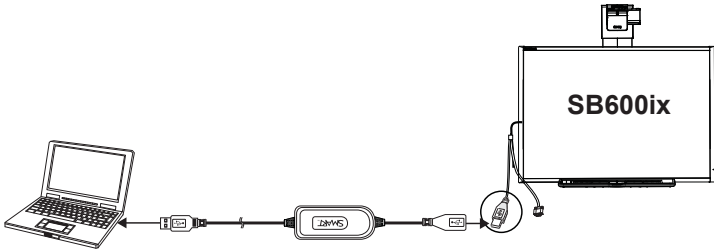
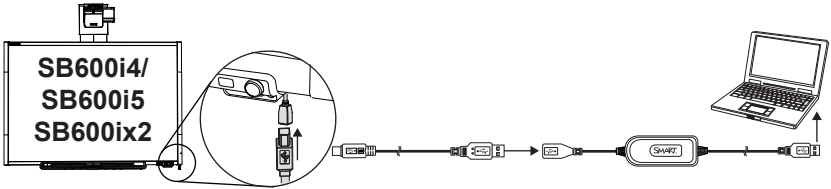
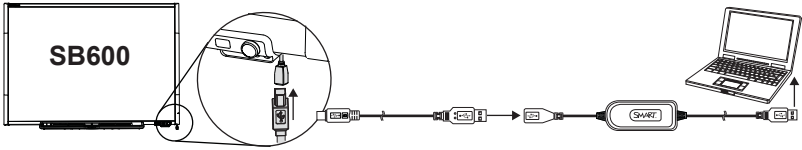
**SB800i5e-SMP:** [smarttech.com/kb/170195](http://smarttech.com/kb/170195)

**SB800ix-SMP:** [smarttech.com/kb/170215](http://smarttech.com/kb/170215)

**SB800ixe-SMP:** [smarttech.com/kb/170258](http://smarttech.com/kb/170258)

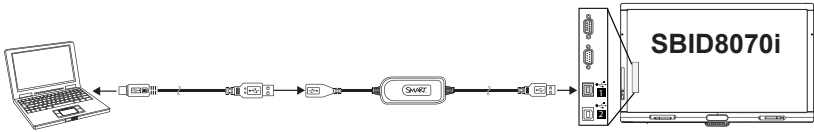
**SB800ix2-SMP:** [smarttech.com/kb/170324](http://smarttech.com/kb/170324)



# SB600



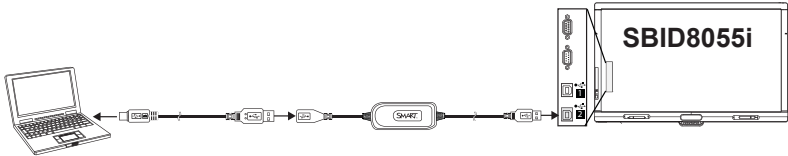
 **SB600i5-SMP:** [smarttech.com/kb/170193](http://smarttech.com/kb/170193)



# SBID



  
 →

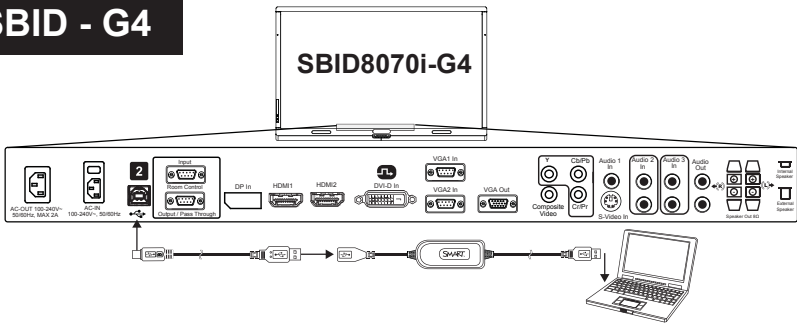
**SBID8070i:** [smarttech.com/kb/155317](http://smarttech.com/kb/155317)  
**SBID8070i-SMP:** [smarttech.com/kb/170217](http://smarttech.com/kb/170217)  
**SBID8070ie-SMP:** [smarttech.com/kb/170252](http://smarttech.com/kb/170252)



  
 →


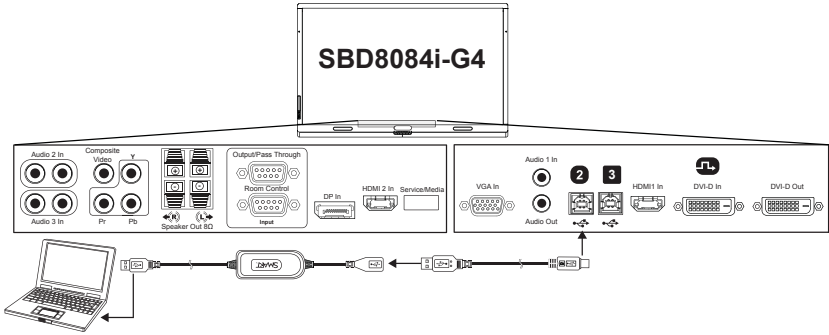
**SBID8055i:** [smarttech.com/kb/170167](http://smarttech.com/kb/170167)  
**SBID8055i-SMP:** [smarttech.com/kb/170223](http://smarttech.com/kb/170223)  
**SBID8055ie-SMP:** [smarttech.com/kb/170251](http://smarttech.com/kb/170251)

# SBID - G4



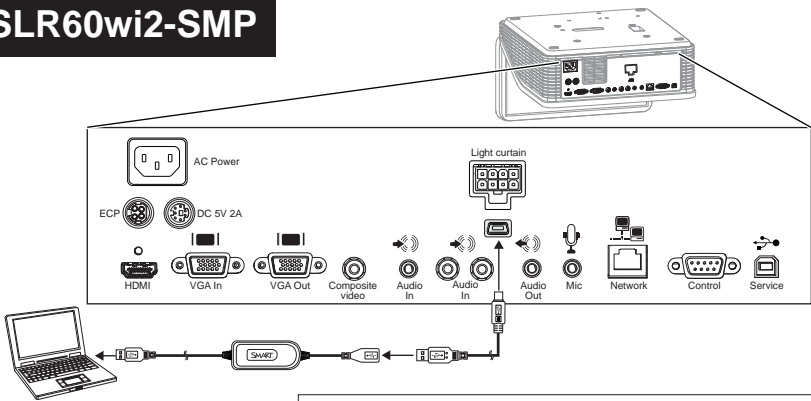
→ [smarttech.com/kb/170446](http://smarttech.com/kb/170446)

# SBD8084i-G4



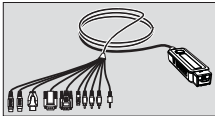
→ [smarttech.com/kb/170446](http://smarttech.com/kb/170446)

# SLR60wi2-SMP

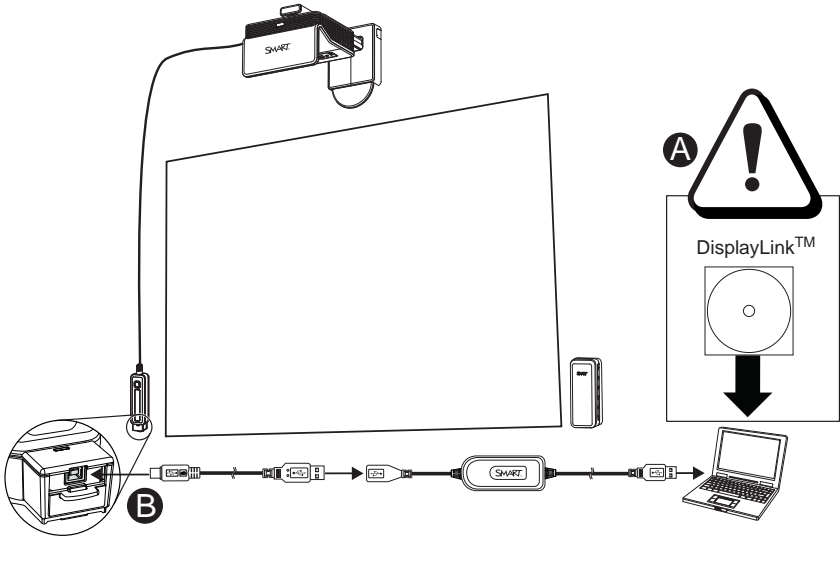


→ [smarttech.com/kb/170259](http://smarttech.com/kb/170259)

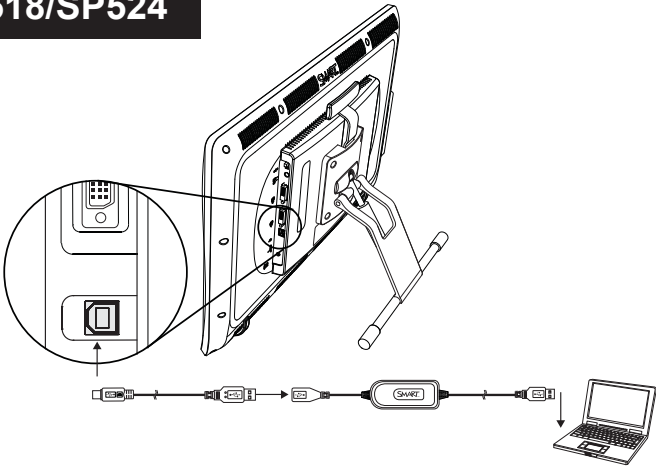
# SLR-XCP



→ [smarttech.com/kb/170431](http://smarttech.com/kb/170431)




**SP518/SP524**




### Hardware environmental compliance

SMART Technologies supports global efforts to ensure that electronic equipment is manufactured, sold and disposed of in a safe and environmentally friendly manner.

### Waste Electrical and Electronic Equipment and Battery regulations (WEEE and Battery Directives)

 Electrical and electronic equipment and batteries contain substances that can be harmful to the environment and to human health. The crossed-out wheeled bin symbol indicates that products should be disposed of in the appropriate recycling stream and not as regular waste. See [smarttech.com/compliance](http://smarttech.com/compliance) for more information.

### FCC Notice

 This equipment has been tested and found to comply with the limits for a Class A digital device, pursuant to part 15 of the FCC Rules. These limits are designed to provide reasonable protection against harmful interference when the equipment is operated in a commercial environment. This equipment generates, uses, and can radiate radio frequency energy and, if not installed and used in accordance with the instruction manual, may cause harmful interference to radio communications. Operation of this equipment in a residential area is likely to cause harmful interference in which case the user will be required to correct the interference at his own expense.



---

[smarttech.com/support](http://smarttech.com/support)  
[smarttech.com/contactsupport](http://smarttech.com/contactsupport)



© 2013 SMART Technologies ULC. All rights reserved. SMART Board, smarttech and the SMART logo are trademarks or registered trademarks of SMART Technologies ULC in the U.S. and/or other countries. All third-party products and company names may be trademarks of their respective owners. Contents are subject to change without notice. This product and/or use thereof covered by one or more of the following U.S. patents; [smarttech.com/patents](http://smarttech.com/patents). Other patents pending. 11/2013.

1015702 Rev A3

[smarttech.com/kb/147790](http://smarttech.com/kb/147790)