



## SMART Response™ LE

interactive response system

The system's wireless remotes meet universal design for learning standards, enabling students at all levels of reading or degrees of fine motor development to easily input their responses.

Gain accurate and immediate insight into comprehension among learners in early education or those with special needs. The SMART Response LE interactive response system combines wireless remotes, a receiver and powerful assessment software that integrates with SMART Notebook™ collaborative learning software. Using their remotes, students can answer questions, receive instant feedback from their teacher and stay involved in lessons.

### Gauge understanding in students at all levels

SMART Response LE includes easy-to-use, colorful remotes that feature a large LCD screen and big buttons with easy-to-understand symbols. The remotes meet universal design for learning (UDL) standards, enabling students at all levels of reading or degrees of fine motor development to easily input their responses.

### Create questions or quizzes with SMART Notebook

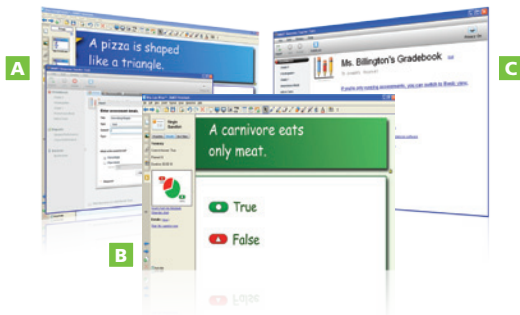
SMART Response LE integrates seamlessly with SMART Notebook software, providing you with a software application that enhances curriculum development, lesson delivery and evaluation. To get started, simply create true-or-false, yes-or-no, or multiple choice questions in SMART Notebook software. Each answer automatically corresponds to one of the five big and colorful buttons on the students' remotes.

### Manage classroom data instantly and effortlessly

When students respond to questions, the system's assessment software automatically summarizes the results in a pie chart or bar graph that everyone in the room can see. The data helps teachers determine if further review is required, giving them the opportunity to adjust their teaching and be assured that every student is following the lesson.

### Evaluate student progress with assessment reports

With SMART Response LE, you can access, view and manage all assessment data in one location. Tag student names or assessment questions with keywords, educational standards and cognitive levels to gain deeper insight into student learning. Create reports that are as simple or as detailed as you need.



- A** Manage data with Teacher Tools
- B** Create and deliver questions in SMART Notebook software
- C** Automatically view student responses in a pie chart or bar graph



- 1** Power button
- 2** Battery status icon
- 3** Large LCD screen display
- 4** Student question button
- 5** Student response buttons
- 6** UDL-friendly design

## Key features

### Assessment software

SMART Response LE includes a receiver, remotes and software. The system is available in 24-, 32- or 40-unit packages and is compatible with Microsoft® Windows® and Mac operating systems.

### Integration with SMART Notebook software

Open SMART Response LE assessment software from a tab in SMART Notebook. With the Gallery of more than 7,000 pieces of graphic-rich content, you can add images and other multimedia to any question or assessment.

### Question variety

Ask different types of questions, including true or false, yes or no and multiple choice.

### Lessons with integrated questions

Create questions for formative and summative assessment, prepare quizzes or exams in advance and ask spontaneous questions to gauge students' understanding.

### Anonymous mode

Allow your students to respond with complete anonymity. Students can use SMART Response LE without signing in.

### Teacher Tools

Use Teacher Tools to access reports that are automatically collected and saved to one easy-to-access file. You can also use the built-in gradebook to track student performance and record test results throughout the year.

### Content pages

Insert content pages between questions to enhance any quiz, test or exam.

### Weighted marking

Assign different point values to individual questions within a test or quiz.

### Keyword tagging

Tag student names and assessment questions with keywords.

### Cognitive level tagging

Tag questions with cognitive levels.

### Easy connection and installation

Connect the receiver to a computer using a USB connection. The receiver can either be mounted on a wall or placed on a desk. No extra power supply is required. Additional receivers can be added for larger class sizes.

### Radio frequency technology

The system provides a reliable and convenient wireless connection between the student remotes and receiver. You don't need a line of sight, and the remote has a range of up to 100' (30 m).

### Batteries

Each remote uses two AA batteries.

### Convenient maintenance

View power status through LED lights on the receiver.

### Importing questions

Import question sets from SMART Exchange, Microsoft® Word® (Windows only), PDFs (Macintosh

only) or ExamView® (xml format or HTML format for ExamView versions 5.2.1 and 6.2.1) Assessment Suite, versions 5.2.1 and 6.2.1.

### Exporting results

You can export results to gradebook file formats, including Microsoft Excel® (Windows only), HTML pages, .csv file, Pearson PowerTeacher™, Schoolnet® GradeSpeed, eSembler™ or a custom format.

### Education standards tagging

You can select tags from a comprehensive list of educational standards and cognitive level tags for the questions you create in SMART Notebook software or you can create custom tags.

### Specifications

#### Receiver size

4 3/4" W x 7/8" H x 2 1/4" D  
(12.0 x 2.2 x 5.7 cm)

#### Receiver weight

5 3/4 oz. (165 g)

#### Remote size

2 1/4" W x 5 5/8" H x 1 1/8" D  
(5.7 x 14.2 x 2.8 cm)

#### Remote weight

7 1/4 oz. (100 g) without batteries

### System requirements

For full system requirements, please visit [smarttech.com/response](http://smarttech.com/response).

## Authorized reseller:

## SMART Technologies

Toll Free 1.866.518.6791 (U.S./Canada)

or +1.403.228.5940

[smarttech.com](http://smarttech.com)