

Speller Software

This Quick Reference provides an overview of how to use Speller software, an interactive application that helps students learn to spell. Speller software is specifically designed for use on a SMART Board™ interactive whiteboard and is available free of charge at

<http://education.smarttech.com/ste/en-GB/Ed+Resource/Free+Software+Applications/Speller.htm>.

Starting a Spelling Game

- 1 Launch Speller software by double-clicking on its desktop icon or selecting **Start > SMART Speller**.

The game interface will appear.

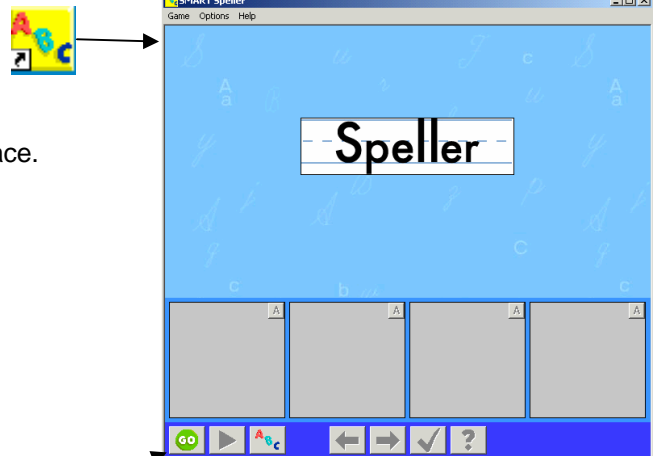
- 2 Press the **Go** button in the lower left corner of the Speller interface.

The Category dialog box will appear.

- 3 Select a word category from the **Category** dropdown.

If you're not sure which category you want, press the **Cancel** button and select **Edit Word Categories** from the **Options** menu to view a list of the words in each category.

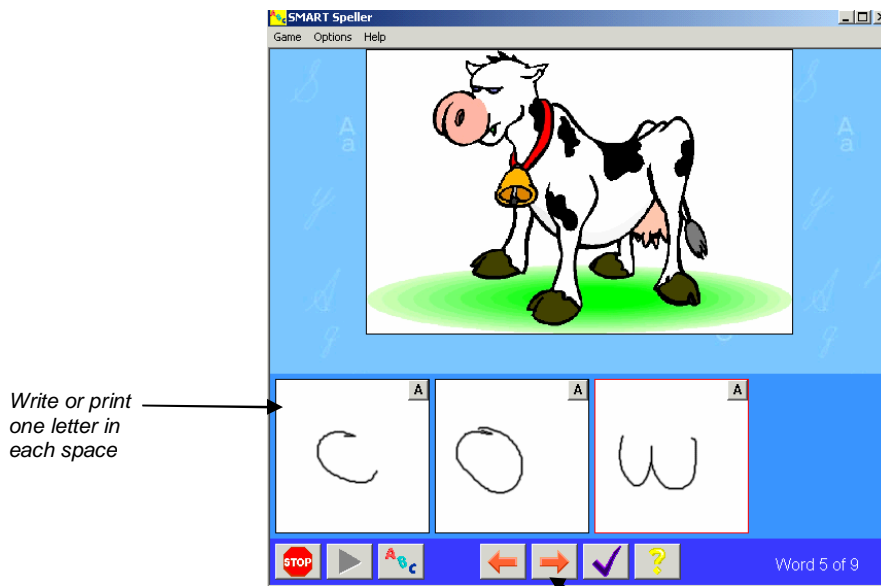
- 4 Press the **OK** button.



Start a new spelling game.

Playing a Game

Each game consists of up to 10 words in the category you have chosen. Students play by listening to an audio recording or looking at a picture, then writing the word letter by letter in the spaces provided with their finger or a pen from the SMART Pen Tray. Players go to the next word on the list by pressing the **Next word** arrow. Speller software automatically totals the number of correct answers at the end of the game.

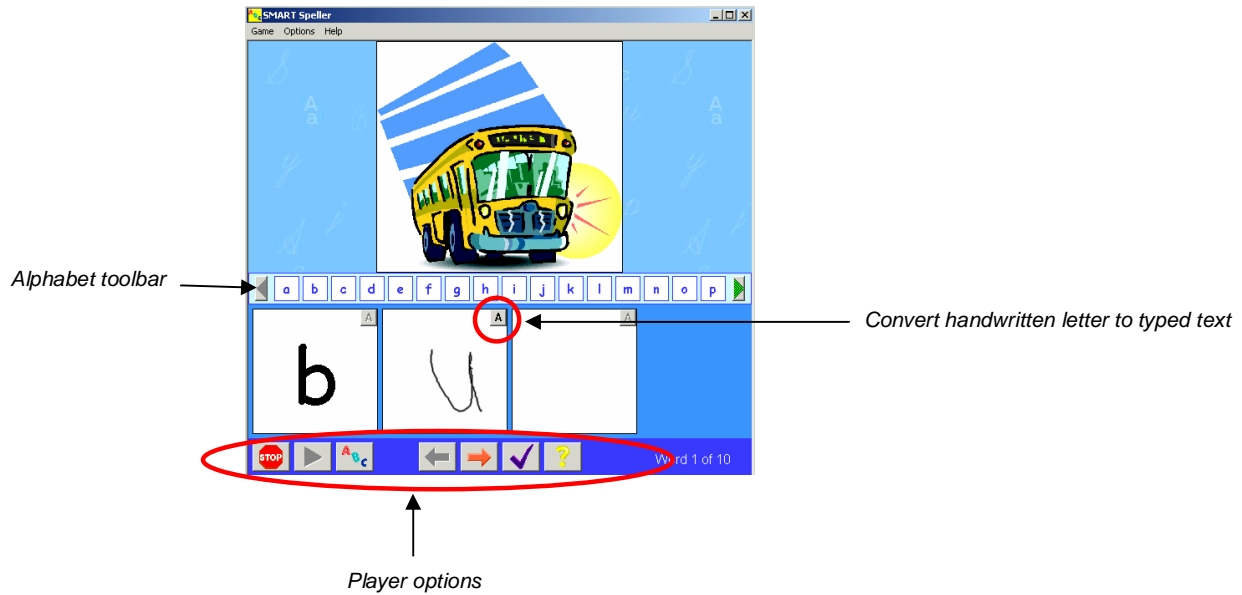


Write or print one letter in each space

Move to next word

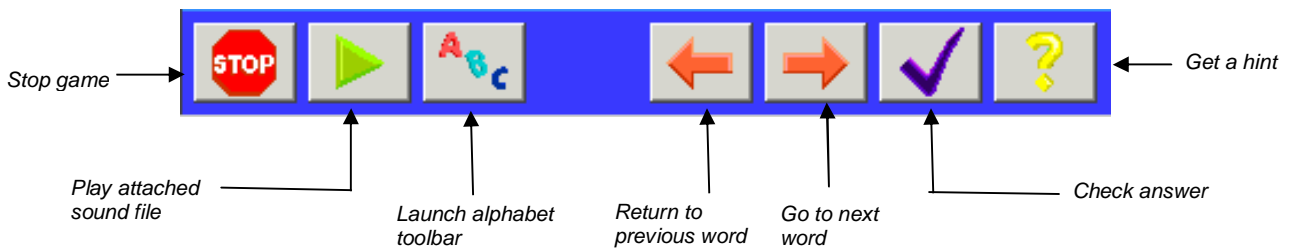
Handwriting Recognition

Speller software automatically converts handwritten letters to typed text when the student moves to the next word in the list. Students who are working on their penmanship skills will find it useful to convert their letters before moving on to the next word, in order to make sure their letters are recognised by the software. Players can also choose to drag and drop letters from an alphabet toolbar.



Player Options

The toolbar at the bottom of the interface give students several options to control how they play the game. Players can choose to replay the audio recording of the word, get a hint or check their answer.



Editing Words and Word Categories

Select **Edit Word Categories** from the **Options** menu to add or delete words and word categories from the **Edit Word Categories** dialog box.

