

Using SMART Sync Software for the First Time

SMART Sync software helps you manage the computers in your classroom, guide learning and interact with students. There are two versions of SMART Sync software, one for teachers and one for students. To perform the procedures in this Quick Reference you must have the SMART Sync Teacher software installed on your computer, and the SMART Sync Student software installed on your students' computers.

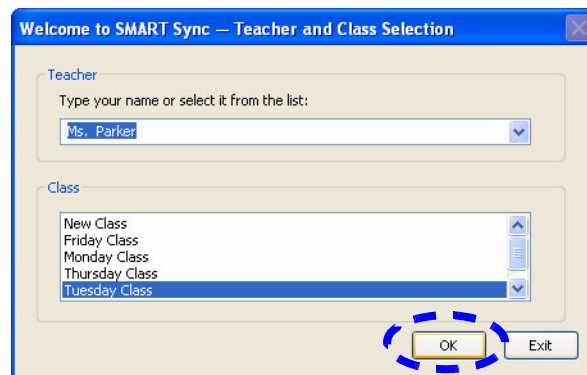
NOTE: SMART Sync must be properly configured by an administrator with the Administrator and Student Configuration tools. Please refer to the *SMART Sync 2009 System Administrator's Guide* for further information.

Getting started

When you first start SMART Sync Teacher software, you're prompted to select a Teacher ID and Class. A Teacher ID is a unique profile that holds teacher-specific classes and settings, and allows your students to identify and connect to you. Teacher IDs also enable multiple teachers to share a computer running SMART Sync Teacher software without interfering with each individual's unique profile, student groups or settings.

Signing in as a Teacher

Everytime you start SMART Sync Teacher software, the *Teacher ID* dialog box appears



- 1 Select your Teacher ID from the **Teacher** drop-down menu
- 2 Select a class from the **Class** list
- 3 Click **OK**. The title in the top-left corner of the SMART Sync interface changes to reflect the new Teacher ID.

NOTE: If the SMART Sync Administrator Tool hasn't been configured on the network, your Teacher ID and Classes won't display. Enter a new Teacher ID in the **Teacher** field and select New Class from the **Class** list. Your new Teacher ID will appear from the drop-down list the next time you start SMART Sync.

TIP: Use your name as the Teacher ID to make it easy for students to determine which teacher they're connected to.

Connecting teachers

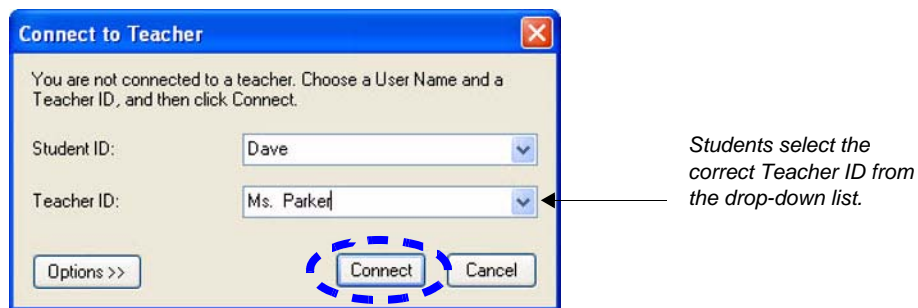
There are different ways for students to connect to teachers using SMART Sync software. The default connection method is to allow the students to choose a Teacher ID from a list when they start SMART Sync Student. Teachers must sign in with a Teacher ID before students can connect to them.

The advantage of this option is that students aren't restricted to only one Teacher ID each time they connect. However, it then becomes your students' responsibility to connect to the correct teacher.

NOTE: Other connection options include automatically connecting to the same Teacher ID, hostname, IP address or Class List Server. To set or change the connection method, refer to the *SMART Sync 2009 System Administrator's Guide* for further information.

To connect to a teacher using SMART Sync Student:

- 1 Double-click the **SMART Sync Student** icon on their desktop. The *Connect to Teacher* dialog box appears.
- 2 Select your name from the drop-down menu
- 3 Select the proper Teacher ID from the drop-down menu, and then click the **Connect** button



Monitoring students

Once the students are connected to your Teacher ID, you can monitor their desktops in the Thumbnails view. Select the **All Students** tab to monitor all the connected computers in your class at once.

