

SMART Business Solutions



SMARTTM

Extraordinary made simple

Contents

About SMART	4
SMART products	
SMART Board 685ix interactive whiteboard system.....	6
SMART Board 685ix appliance-based interactive whiteboard system.....	8
SMART Board 680i interactive whiteboard system	10
SMART Board 600 series interactive whiteboard	12
SMART Podium ID422w interactive pen display	14
SMART Bridgit conferencing software	16
SMART Meeting Pro Premium software	18
SMART support	20
SMART stories	
BT adapts to a new phase of globalization.....	22
SMART's collaboration solutions enable O2 to work better, connected	24
SMART's business solutions enable Cundall's distributed teams to work together.....	26



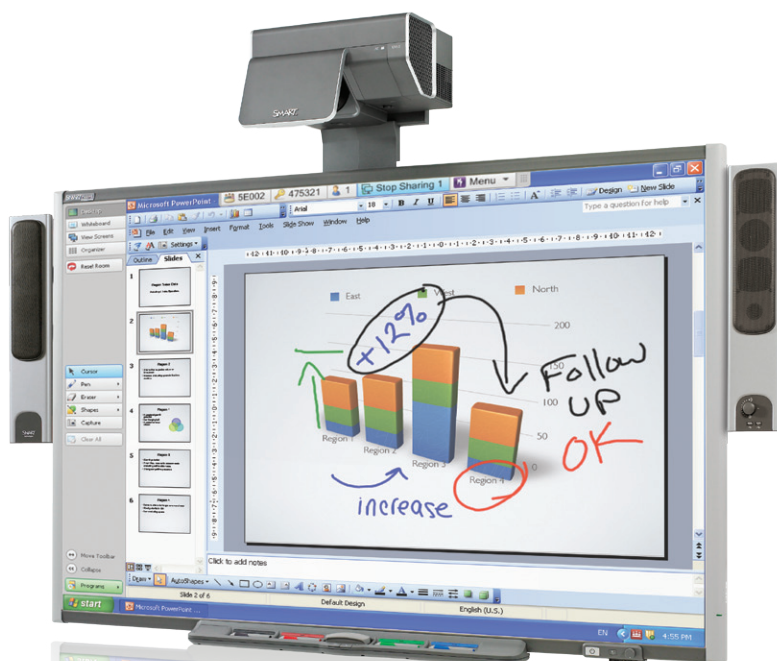
SMART business solutions

At SMART, we know that collaboration isn't about technology. It's about people, knowledge and the ability to bring them together in a meaningful way. With SMART business solutions, collaboration sessions become visual, interactive experiences, and keeping records of meetings is effortless. Teamwork produces valuable results, whether you're working with your colleagues in person or across distances.

SMART business solutions consist of integrated, touch-enabled interactive whiteboards, displays and systems, and innovative tools that enable productive collaboration. Moving well beyond flipcharts and dry-erase boards, our solutions help you create engaging workspaces, where teams easily access and interact with information. And you can save and share work, regardless of your location.

Accomplish more in meetings

Discover how we can help you accelerate decision making and problem solving by introducing unparalleled efficiency and flexibility to your meetings and work sessions. Simply turn on your SMART Board™ interactive whiteboard and you can immediately access your resources and connect with people from your meeting room. Share information, write notes, write over documents and capture



everything in a single file that you can e-mail to your team. With many of our SMART business solutions, you can

- Access digital files and applications from your meeting room
- Schedule a conferencing session or start one on the fly
- Write notes in digital ink and annotate over documents and applications
- Work on the same document with local or remote meeting participants
- Capture notes, save them and distribute them immediately

Inspire productive collaboration

How can we help you drive business results? Our business solutions inspire productive collaboration by adding interactivity to your meetings – and by making them easy. Our SMART Board interactive whiteboard provides an engaging way to interact with digital information naturally. The large interactive screen also creates a focus point for your discussions, ensuring that meeting participants stay engaged and in agreement. With many of our SMART business solutions, you can also

- Write notes and control applications with your finger or the pen
- Access the Internet or pull up documents spontaneously
- Manage conferencing sessions using the interactive whiteboard
- Switch between interactive whiteboarding, conferencing and the desktop quickly
- Connect audiovisual devices and switch between them with one touch



SMART Board 685ix interactive whiteboard system

The 685ix is an integrated system that includes the following:

- Widescreen SMART Board interactive whiteboard
- SMART UX60 projector
- Extended control panel
- SMART Meeting Pro software

Increase productivity by accomplishing more in meetings. The SMART Board 685ix interactive whiteboard system is the first integrated system to combine an ultra-short-throw projector, a touch-enabled widescreen interactive whiteboard and an extended control panel. The 685ix works with your dedicated meeting room computer. You can access and easily share network information, record ideas and decisions, save notes and distribute them after the meeting.

Save notes and save time

With the 685ix system, you can access your files, run applications and browse the Internet with a touch of your finger. The 685ix also includes SMART Meeting Pro™ software, which installs on your meeting room computer. It enables you to write notes in digital ink, insert screen captures, and save marked-up pages as a single PDF or PPT file. You can also write in digital ink in Microsoft® Word, Excel® and PowerPoint® files, as well as AutoCAD® and Adobe® Acrobat® files, and save your work in the native format – complete with digital markups. And when the meeting is finished, you can e-mail your notes to your team.

Experience superb image quality

The SMART UX60, the system's ultra-short-throw projector, virtually eliminates shadows, glare and distracting projector light. Positioned above the interactive whiteboard, the SMART UX60 projector displays bright, crisp images in a 16:10 aspect ratio with a native WXGA (1280 x 800) widescreen resolution from only 12" (30.5 cm) away.

Make room for ideas

The 685ix system gives your teams plenty of room to work and share information. The system features an 87" (221 cm) widescreen interactive whiteboard that has 20 percent more workspace than a standard-sized interactive whiteboard. The positioning of the system's projector above the interactive whiteboard leaves ample space for colleagues to collaborate and ensures they can clearly see meeting notes from anywhere in the room.



- 1** Widescreen SMART Board interactive whiteboard – A touch-sensitive interactive whiteboard that offers 20 percent more workspace than a standard-sized interactive whiteboard. It connects to your computer and projector.
- 2** SMART UX60 projector – An integrated, ultra-short-throw WXGA (1280 x 800) projector with a 16:10 aspect ratio. The SMART UX60 has a 12" (30.5 cm) optical throw distance to the interactive whiteboard.
- 3** Extended control panel – A panel that provides centralized control over multimedia devices.

Key features

Quick start

Turn the 685ix on or off quickly with the push of a single button. The whole system starts up and is ready to use in 60 seconds. You can also touch the control panel to switch between multimedia devices.

Write notes

Write in digital ink in Microsoft Word, Excel and PowerPoint files and save all handwritten notes in your documents, spreadsheets and presentations.

Save function

Capture all your work in SMART Meeting Pro to a single file and save it as a PPT file or PDF. You can also write over Microsoft Word, Excel and PowerPoint files, as well as AutoCAD and Adobe Acrobat files, and save your work in the native format – complete with digital markups.

SMART Meeting Pro software

SMART Meeting Pro features an intuitive interface that inspires productive collaboration by enabling you to write notes in digital ink, annotate over documents and applications, and save everything to a single file.

Virtually shadow and glare free

Compared to longer-throw projectors that are mounted on ceilings or walls, the 685ix system's ultra-short-throw projector, the SMART UX60, creates virtually no shadows or glare.

Front-of-room centralized control

Switch between all your audiovisual devices directly from the extended control panel. The extended control panel also has a dual-USB port that enables you to connect two computers to the SMART Board interactive whiteboard and easily switch between them as required.

Image quality

Experience superb image quality with the 685ix. The projector uses BrilliantColor™ technology by Texas Instruments to produce high levels of brightness and contrast and true-color quality. This makes it practically immune to color decay and produces a vibrant image, even after years of use.

Filter free

The SMART UX60 projector features a filter-free design, which ensures no filters need to be cleaned, maintained or replaced.

Color decay resistant

The SMART UX60 projector is highly resistant to color decay, image degradation and tinting, so the image stays vibrant and sharp, even after years of use.

Network enabled

Connect the SMART UX60 projector to your IP network to send and receive commands to and from your web server or SNMP client. As a networked interactive whiteboard system, the 685ix has asset management features that enable you to control and manage the projector remotely.

Long lasting lamp

Be confident in the reliability of your projector lamp – the SMART UX60 lasts for 2,500 hours.

Warranty

Get a three-year warranty on the SMART UX60 projector. The SMART Board interactive whiteboard has a five-year warranty upon product registration.

Specifications

SB685ix-MP

Size

77 1/2" W x 49 1/2" H x 5 1/8" D
(196.9 cm x 125.7 cm x 13.0 cm)

Active screen area

74" W x 46 1/8" H (188.0 cm x 117.2 cm)
87 1/8" (221 cm) diagonal
16:10 aspect ratio

Weight

42 lb. (19.1 kg)

Operating systems

Microsoft Windows® XP operating system with Service Pack 3 • Windows Vista® operating system for both 32- and 64-bit processors

For full specifications, please visit smarttech.com/685ixspecs.

Available premium model (SB685ix-MPP)

The premium system gives you more software functionality and accessories:

- Integrated speakers with USB connections to easily attach laptops and other peripherals
- A wall mount that physically supports your computer and provides easy access
- Additional interactive whiteboarding tools
- More options for saving files, including image files
- The ability to show pages on multiple displays and move information between them
- Configured for SMART Bridgit™ conferencing software



SMART Board 685ix interactive whiteboard appliance-based system

The appliance-based 685ix is an integrated system that includes the following:

- Widescreen SMART Board interactive whiteboard
- SMART UX60 projector
- Extended control panel
- SMART Hub collaboration appliance

Create naturally collaborative environments with the SMART Board 685ix interactive whiteboard appliance-based system, the first integrated system to combine an ultra-short-throw projector, the SMART Hub collaboration appliance and a touch-enabled widescreen interactive whiteboard. The appliance-based 685ix does not require a dedicated meeting room computer. You can walk up to the interactive whiteboard and easily share information, record ideas and decisions, then save your notes on a USB drive or distribute them via e-mail.

Walk up and use

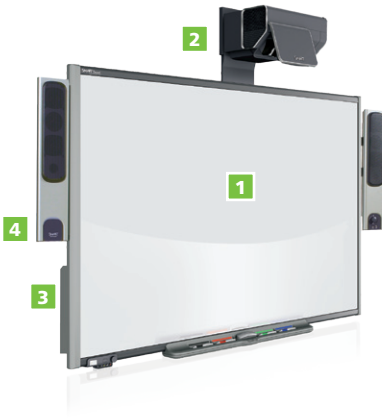
With the appliance-based 685ix system, you enjoy interactive whiteboarding and information-sharing, even if you don't have a dedicated meeting room computer. The SMART Hub collaboration appliance enables you to connect a laptop and multimedia devices to interact with your digital material. Write over documents, spreadsheets and presentations on the interactive whiteboard. Save notes as a single PDF and e-mail them directly to colleagues or take them with you on a USB drive.

Experience superb image quality

The SMART UX60 ultra-short-throw projector virtually eliminates shadows, glare and distracting projector light, so your teams can focus on the meeting, not the technology. Positioned above the interactive whiteboard, the SMART UX60 projector displays bright, crisp images in a 16:10 aspect ratio with a native WXGA (1280 x 800) widescreen resolution from only 12" (30.5 cm) away.

Make room for ideas

The 685ix features an 87" (221 cm) widescreen interactive whiteboard that has 20 percent more workspace than a standard-sized interactive whiteboard. The positioning of the projector above the interactive whiteboard leaves more room for colleagues to collaborate and ensures they can clearly see meeting notes from anywhere in the room.



- 1** Widescreen SMART Board interactive whiteboard – A touch-sensitive interactive whiteboard that offers 20 percent more workspace than a standard-sized interactive whiteboard. It connects to your computer and projector.
- 2** SMART UX60 projector – An integrated, ultra-short-throw WXGA (1280 x 800) projector with a 16:10 aspect ratio. The SMART UX60 has a 12" (30.5 cm) optical throw distance to the interactive whiteboard.
- 3** SMART Hub – An appliance that enables interactivity without a computer. The SMART Hub is mounted behind the SMART Board interactive whiteboard.
- 4** USB speakers – An audio system consisting of a pair of 15-watt, stereo-amplified speakers with a two-port USB hub and a volume control button.

Key features

Quick start

Turn the 685ix on or off quickly with the push of a single button. The whole system starts up and is ready to use in 60 seconds. You can also touch the control panel to switch between multimedia devices.

Write notes

Write in digital ink and write over your documents, spreadsheets and presentations.

Save function

Save notes as a single PDF and e-mail them directly to colleagues or take them with you on a USB drive.

SMART Hub collaboration appliance

The SMART Hub adds instant interactive whiteboarding to your SMART Board interactive whiteboard without the need for a computer.

Virtually shadow and glare free

Compared to longer-throw projectors that are mounted on ceilings or walls, the 685ix system's ultra-short-throw projector, the SMART UX60, creates virtually no shadows or glare.

Image quality

Experience superb image quality with the 685ix. The projector uses BrilliantColor technology by Texas Instruments to produce high levels of brightness and contrast and true-color quality. This makes it practically immune to color decay and produces a vibrant image, even after years of use.

Front-of-room control

Switch between all your audiovisual devices directly from the control panel. Select between devices such as DVD players, digital cameras, document cameras and VCRs.

Integrated equipment

Easily access port connections, which are found on the attached speakers and fixed-unit wall mount. The wall mount also physically supports your computer.

Filter free

The SMART UX60 features a filter-free design, which ensures no filters need to be cleaned, maintained or replaced.

Color decay resistant

The SMART UX60 projector is highly resistant to color decay, image degradation and tinting, so the image stays vibrant and sharp, even after years of use.

Long lasting lamp

Be confident in the reliability of your projector lamp – the SMART UX60 lasts for 2,500 hours in standard mode and 4,000 hours in economy mode.

Warranty

Get a three-year warranty on the SMART UX60 projector and a two-year warranty on the SMART Hub VE collaboration appliance. The SMART Board interactive whiteboard has a five-year warranty upon product registration.

Specifications

SB685ix HVE

Size

77 1/2" W x 49 1/2" H x 5 1/8" D
(196.9 cm x 125.7 cm x 13.0 cm)

Active screen area

74" W x 46 1/8" H (188.0 cm x 117.2 cm)
87 1/8" (221 cm) diagonal
16:10 aspect ratio

Weight

42 lb. (19.1 kg)

Available premium model (SB685ix-HSE)

Extend your capabilities with the system upgrade. Features of the upgrade include the following:

- Connections for an additional laptop and three additional multimedia devices, such as DVD players, digital cameras, document cameras and VCRs
- The ability to write over video
- Configured for SMART Bridgit conferencing software



SMART Board 680i interactive whiteboard system

The 680i is an integrated system that includes the following:

- SMART Board interactive whiteboard
- Integrated projector
- Extended control panel
- SMART Meeting Pro software

Improve meeting efficiency and inspire agile decision making with the SMART Board 680i interactive whiteboard system. This integrated system combines a touch-enabled interactive whiteboard, an extended control panel and digital projector. The 680i allows you to access the full range of applications and data available on your meeting room computer. You can also record ideas and decisions, save notes and distribute them after the meeting.

Save notes and save time

The 680i includes SMART Meeting Pro software, which installs on your meeting room computer. It enables you to write notes in digital ink, insert screen captures, and save marked-up pages as a single PPT file or PDF. You can also write in digital ink over Microsoft Word, Excel and PowerPoint files, as well as AutoCAD and Adobe Acrobat files, and save your work in the native format – complete with digital markups. And when the meeting is finished you can e-mail your notes to your team.

Access your resources instantly

The SMART Board 680i interactive whiteboard system provides an interactive surface that is connected to your dedicated meeting room computer, providing you with instant access to your resources. The system starts up in 60 seconds, with the push of a single button. Access your digital documents, run applications and browse the Internet with a touch of your finger.

Take advantage of an integrated system

The 680i is easy to install, maintain and secure, reducing your total cost of ownership. The system's durable surface, collapsible multiposition boom and network-enabled projector ensure your investment is reliable and protected. The SMART UF55 projector's filter-free design means you have no costly filters to clean, maintain and replace.



- 1** SMART Board interactive whiteboard – A touch-sensitive interactive whiteboard that connects to your computer and projector.
- 2** SMART UF55 projector – An integrated XGA (1024 x 768) projector that offers a 4:3 aspect ratio and support for 16:9, 16:10 and 4:5 ratios.
- 3** Extended control panel – A panel that provides centralized control over meeting room technology.

Key features

Quick start

Turn the 680i on or off quickly with the push of a single button. The whole system starts up and is ready to use in 60 seconds. You can also use the control panel to switch between multimedia devices.

Write notes

Write in digital ink over applications such as Microsoft Word, Excel and PowerPoint, and save all handwritten notes directly into your documents, spreadsheets and presentations.

Save function

Capture all your work in SMART Meeting Pro to a single file and save it as a PPT file or PDF. You can also write over Microsoft Word, Excel and PowerPoint, as well as AutoCAD and Adobe Acrobat files, and save your work in the native format – complete with digital markups.

SMART Meeting Pro software

SMART Meeting Pro features an intuitive interface that inspires productive collaboration by enabling you to write notes in digital ink, annotate over documents and applications, and save everything to a single file.

Simple installation

Install the 680i quickly and easily with the boom and swivel mount – with no need for complicated wiring or ceiling mounting.

Image quality

Experience superb image quality with the 680i. The SMART UF55 projector uses BrilliantColor technology to produce visuals with true-color quality and high levels of brightness and contrast.

Networked enabled

The projector is network enabled, so it can be connected to your office IP network to enable comments to be sent or received through the web server or SNMP client.

Filter free

The SMART UF55 projector is filter free, has a lamp life of 3,000 hours in standard mode and 4,000 hours in economy mode, and is resistant to color decay, image degradation and tinting, so the image stays sharp even after years of use.

Front-of-room centralized control

Switch between all your audiovisual devices directly from the extended control panel.

Multiposition boom

The 680i boom can be positioned to accommodate multiple room sizes and SMART Board interactive whiteboards.

Warranty

Get a three-year warranty on the SMART UF55 projector. The SMART Board interactive whiteboard has a five-year warranty upon product registration.

Operating systems

Microsoft Windows XP operating system with Service Pack 3 • Windows Vista operating system for both 32- and 64-bit processors

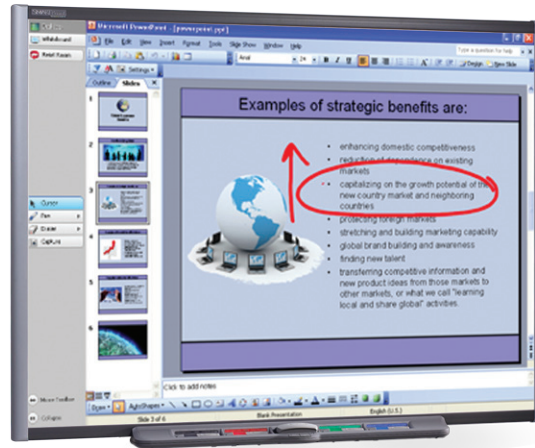
SMART Board interactive whiteboard specifications

Model	SB680i3-MP (standard size)	SB685i3-MP (widescreen)
Size	65 1/4" W x 49 1/2" H x 5 1/8" D (165.7 cm x 125.7 cm x 13.0 cm)	77 1/2" W x 49 1/2" H x 5 1/8" D (196.9 cm x 125.7 cm x 13.0 cm)
Active screen area	61 5/8" W x 46 1/8" H (156.5 cm x 117.2 cm), 77" (195.6 cm) diagonal	74" W x 46 1/8" H (188.0 cm x 117.2 cm), 87 1/8" (221.3 cm) diagonal, 16:10 aspect ratio
Weight	30 lb. (13.6 kg)	42 lb. (19.1 kg)
Projector	SMART UF55 projector, XGA (1024x768) resolution	SMART UF55w, WXGA (1280x800) widescreen resolution

Available premium model

The premium system gives you more software functionality and accessories:

- Additional interactive whiteboarding tools
- More options for saving files, including image files
- The ability to show pages on multiple displays and move information between them
- Configured for SMART Bridgit conferencing software



SMART Board 600 series interactive whiteboard

The SMART Board interactive whiteboard provides the following:

- An interactive surface that enables you to access applications and resources on your meeting room computer
- The ability to write over applications such as Microsoft Word, Excel and PowerPoint and to save all handwritten notes directly into your documents, spreadsheets and presentations
- Touch Recognition, a feature that enables you to write with a pen, erase with your palm and move objects with your finger without having to access other tools, buttons or on-screen menus

Create collaborative, engaging, and productive workspaces with the SMART Board 600 series interactive whiteboard. Delivering intuitive performance and legendary ease of use, the 600 series connects to your computer and projector, enabling you to show your desktop and control applications with the touch of a finger. You can easily share information, save your notes and distribute them after the meeting.

Save notes and save time

The 600 series includes SMART Meeting Pro software, which installs on your meeting room computer. It enables you to write notes in digital ink, insert screen captures, and save marked-up pages as a single PPT file or PDF. You can also write in digital ink in Microsoft Word, Excel and PowerPoint files, as well as AutoCAD and Adobe Acrobat files, and save your work in the native format – complete with digital markups. And when the meeting is finished, you can e-mail your notes to your team.

Inspire true collaboration

Unleash your team's potential with the SMART Board interactive whiteboard. You can share digital material, analyze data, brainstorm, solve problems and document decisions more efficiently than ever before. Interactive meetings enable improved teamwork and greater productivity, as everyone is engaged and contributing ideas.

Touch makes it easy

Using the SMART Board interactive whiteboard is a completely natural experience. You can write with a pen, erase with your palm, and move objects with your finger without the need for extra tools, on-screen menus or buttons. With Touch Recognition, the SMART Board interactive whiteboard recognizes your touch and switches modes automatically.



- 1** SMART Board interactive whiteboard – A touch-sensitive interactive whiteboard that connects to your computer and your projector.
- 2** SMART Pen Tray – Pick up a pen or the eraser, and the tray automatically detects which tool you've selected. Buttons activate the On-Screen Keyboard, right-click and help function.
- 3** USB connection – Effortlessly connect the SMART Board interactive whiteboard to your computer.

Key features

Write notes

Write in digital ink over files, websites and videos then save your notes for distribution and later reference.

Save function

Capture all your work in SMART Meeting Pro to a single file and save it as a PPT file or PDF. You can also write in Microsoft Word, Excel and PowerPoint files, as well as AutoCAD and Adobe Acrobat files, and save your work in the native format – complete with digital markups.

SMART Meeting Pro software

SMART Meeting Pro features an intuitive interface that inspires productive collaboration by enabling you to write notes in digital ink, annotate over documents and applications, and save everything to a single file.

Touch Recognition

Write with a pen, erase with your palm and move objects with your finger without having to access additional tools, on-screen menus or buttons.

Durable surface

The interactive whiteboard's resilient, hard-coated, polyester front sheet is secured over a robust aluminum composite backboard. The surface is tear proof, optimized for projection, compatible with dry-erase markers and easily cleaned.

Wall-mount bracket

Install your SMART Board interactive whiteboard simply and securely.

Warranty

The SMART Board interactive whiteboard has a five-year warranty upon product registration, and two years standard.

Operating systems

Microsoft Windows XP operating system with Service Pack 3 • Windows Vista operating system for both 32- and 64-bit processors

Available software upgrade

SMART Meeting Pro Premium gives you powerful software functionality:

- Additional interactive whiteboarding tools
- More options for saving files, including image files
- The ability to support pages on multiple displays and move information between them
- Configured for SMART Bridgit conferencing software

Visit smarttech.com/meetingpropremium to learn more.

Widescreen models	Active screen area (diagonal)
690 (SB690-MP)	94" (238.8 cm)
685 (SB685-MP)	87" (221.0 cm)
Standard models	Active screen area (diagonal)
680 (SB680-MP)	77" (195.6 cm)
660 (SB660-MP)	64" (162.6 cm)
640 (SB640-MP)	48" (121.9 cm)



SMART Podium™ ID422w interactive pen display

The ID422w provides the following:

- A large workspace with a widescreen 22" (56 cm) display
- A high-definition solution with flexible scaling options to support 16:10 and 4:3 resolutions
- The ability to write notes in digital ink and save everything to a single file
- The ability to write into Microsoft Word, Excel, and PowerPoint – and save work in the native files

The SMART Podium will help you collaborate with colleagues by bringing interactivity to your meeting materials.

Connected to your meeting room computer and projector, the SMART Podium enables you to write over files in applications such as Microsoft Word, Excel and PowerPoint, and save all handwritten notes directly into your documents, spreadsheets and presentations. You can also access websites and multimedia files, and display everything you do to a large screen so everyone can see.

Large workspace in a widescreen display

The ID422w provides a large workspace with a widescreen 22" (56 cm) display. It's fully compatible with any widescreen devices you use to share your materials. Now it's easier than ever to engage meeting participants with wide-format content such as videos and images.

Seamless integration with your existing technology

With a high-definition resolution in a 16:9 aspect ratio, the ID422w also has flexible scaling options to support 16:10 and 4:3 resolutions, making it well suited to your existing technology and ensuring support for your future technology investments.

Save notes and save time

The ID422w comes with SMART Meeting Pro software, which enables you to save your notes, screen captures, images and other work to a single file. You can also write notes over any type of document, no matter what the format.



- 1** On-screen display buttons
- 2** Pen buttons – Left mouse button, digital ink color, eraser
- 3** USB ports
- 4** Function buttons – Access the right mouse click, On-Screen Keyboard, screen capture tool, Floating Tools toolbar, and SMART Meeting Pro software

Key features

Widescreen display

Connect the ID422w to a computer and easily manipulate highly detailed materials on the large, widescreen 22" (56 cm) display. The SMART Podium is designed with straight sides and a flat bezel, so there is nothing to impede your natural writing flow.

Interactive screen

Control your computer with the tethered pen and write over any application with digital ink.

Write notes

Write in digital ink over Microsoft Word, Excel and PowerPoint files and save all handwritten notes in your documents, spreadsheets and presentations.

Save function

Capture all your work in SMART Meeting Pro to a single file and save it as a PPT file or PDF. You can also write in Microsoft Word, Excel and PowerPoint, as well as AutoCAD and Adobe Acrobat files, and save your work in the native format – complete with digital markups.

SMART Meeting Pro software

SMART Meeting Pro features an intuitive interface that inspires productive collaboration by enabling you to write notes in digital ink, annotate over documents and applications, and save everything to a single file.

Battery-free, tethered pen

Write smoothly and comfortably with the tethered pen. It's the point of contact on the screen, so you don't have to worry if you brush the screen with your palm or sleeve. And because the pen is battery free, there's no maintenance cost or downtime searching for replacement batteries.

Pen buttons

Change ink color, use the eraser or access the left mouse button without crowding your display with toolbars.

Function buttons

Quickly access the right mouse click, On-Screen Keyboard, screen capture tool, Floating Tools toolbar and SMART Meeting Pro software.

On-screen display buttons

Fine-tune display properties to suit your preferences.

Adjustable tilt stand

Move the console to a comfortable viewing angle.

VESA mounting plate

Use a variety of VESA mounting arms to permanently mount SMART Podium interactive pen displays on furniture. The ID422w uses the 4" (100 mm) plate.

USB connection

Easily connect the ID422w to your computer.

USB ports

Enhance your presentation by connecting a memory key, document camera or other peripherals to the three 2.0 high-speed ports.

Video connection

Connect the ID422w to a computer and digital projector with the DVI, HDMI or VGA port and both the projector and the SMART Podium will display the same image simultaneously.

Warranty

The SMART Podium interactive pen display comes with a two-year warranty.

Operating systems

Microsoft Windows XP operating system with Service Pack 3 • Windows Vista operating system for both 32- and 64-bit processors

Technical specifications

Size

22 1/4" W x 15 1/4" H x 2 1/8" D
(56.5 cm x 38.5 cm x 5.6 cm)

With tilt stand (lowest position)

22 1/4" W x 6 3/4" H x 17" D
(56.5 cm x 17.1 cm x 43.2 cm)

With tilt stand (highest position)

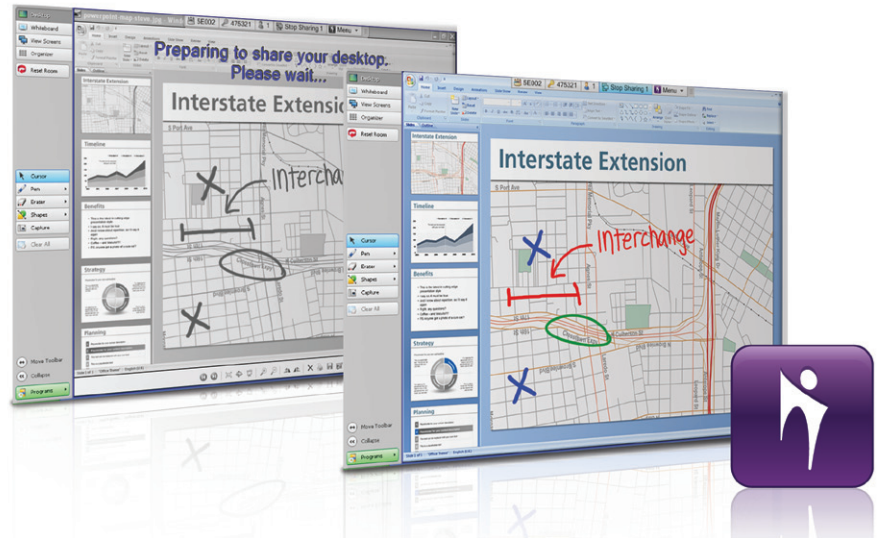
22 1/4" W x 15 3/4" H x 10 1/4" D
(56.5 cm x 40 cm x 26 cm)

Display area

18 3/4" W x 10 3/4" H (47.7 cm x 27.3 cm)
21 1/4" (54 cm) diagonal

Weight (with stand)

17 lb. 10 oz. (7.7 kg)



SMART Bridgit conferencing software

SMART Bridgit conferencing software enables you to

- Create instant meeting sessions
- Connect with local or remote participants
- Share data, voice and video over the Internet
- Share multiple SMART Board interactive whiteboards and desktops
- Write over the same documents and applications simultaneously
- Reduce travel costs

Create collaborative sessions that save time, connect local and remote participants and reduce travel. With SMART Bridgit conferencing software, your teams can easily access and interact with information, regardless of their location. SMART Bridgit is a cost-effective software application that lets you schedule meetings and connect, share and collaborate with local or remote participants using computers or SMART Board interactive whiteboards.

Create instant connections

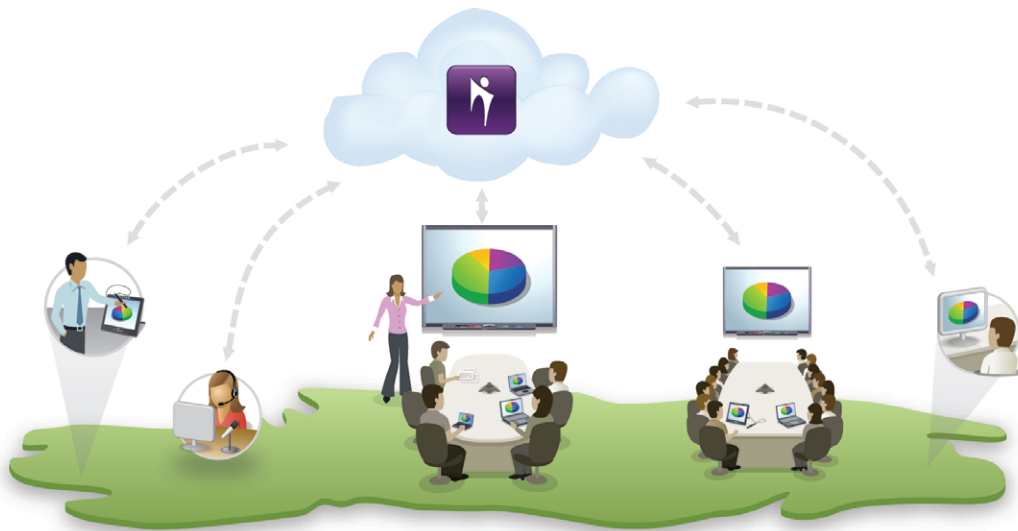
SMART Bridgit software enables you to effortlessly share data, voice and video with anyone who has an Internet connection – at any time and from any location. Whether a meeting is planned or spontaneous, inviting colleagues is simple. SMART Bridgit can automatically generate an e-mail invitation for you, and when participants accept, they can join the meeting without installing any special software.

Inspire participation with interactivity

With SMART Bridgit, your teams can write and share digital notes, review and edit documents, and interact directly with other meeting room participants using connected laptops or SMART Board interactive whiteboards. Your colleagues can see anything you are doing on your desktop, such as working with spreadsheets, delivering presentations or viewing websites. Not only can you and other participants share a desktop, but other participants can write over it. And more than one participant can write at the same time, allowing your team to interact with digital information easily.

Experience a complete conferencing solution

SMART Bridgit integrates with Microsoft Office Outlook® and Exchange Server, enabling you to schedule meetings that automatically start on a SMART Bridgit server. You can also add interactive whiteboarding tools with SMART Meeting Pro Premium software, or share and work with information on multiple connected SMART Board interactive whiteboards or interactive displays.



SMART Bridgit server software allows you to connect multiple SMART Board interactive whiteboards and desktops.

Key features

Simple connection

Connect to anyone with a broadband Internet connection and share voice, video and data. You can start or join a conference at any time.

SMART Board interactive whiteboard integration

Share and work with information on other SMART Board interactive whiteboards or interactive displays.

One touch display sharing

Enable meeting participants to see anything you have open on your desktop, such as spreadsheets, presentations or websites, with one click.

Desktop notes

Highlight information by writing over a shared desktop. More than one meeting participant can write at the same time.

Remote control

Take control of another participant's desktop to demonstrate a solution or provide assistance.

Automatic invitations

Send invitations via an automatically generated e-mail. Participants can join your meeting without the need for special software.

Microsoft Office Outlook and Exchange Server integration

Use the SMART Scheduler to create meetings in Microsoft Outlook that automatically start on a specified SMART Bridgit server.

Built-in voice over Internet protocol (VoIP)

Enable up to four participants to use voice with existing microphone headsets or room conference microphones. VoIP is fully integrated into SMART Bridgit, so there are no numbers to dial.

Webcam support

Enable up to four participant webcams to be shown simultaneously in a session.

Instant messaging

Ask questions or discuss ideas without disrupting the flow of the meeting by using integrated text messaging.

Presentation tools

Use the pointer tool to direct attention to a specific screen area.

Secure environment

Protect information with multilayer password protection and 256-bit SSL encryption, the same security used by online banking systems.

Language support

Enhance communication with support for nine languages. You can easily switch between languages directly from the interface.

Global server network

WAN bandwidth optimization and supports multi-site Bridgit server deployment

System requirements

Server requirements

800 MHz Pentium III processor, 512 MB RAM • Windows 2000, Windows XP, Windows Vista or Windows operating systems • Windows Server® 2003 operating system • Windows operating system software or Novell® NetWare® software 6.0

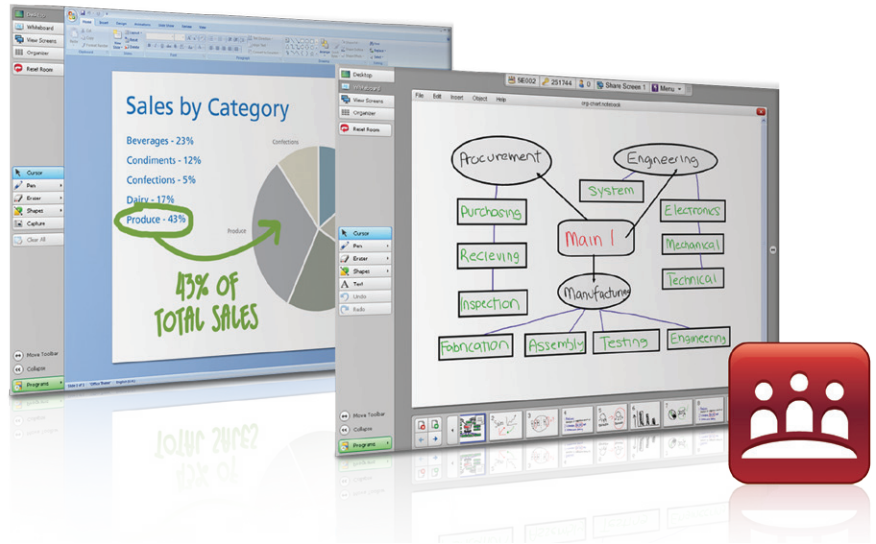
Client requirements

Windows operating systems

128 MB of RAM (256 MB RAM for webcam support) • Pentium III 800 MHz • Windows 98, Windows Me, Windows 2000, Windows NT® 4.0 operating system, Windows XP, Windows Vista operating systems • 56 Kbps Internet connection (broadband required for webcam support)

Macintosh computers

256 MB of RAM (512 MB RAM for webcam support) • G4 1 GHz (G4 1.42 GHz for webcam support) • Mac OS X 10.3.9 and 10.4.X operating system • 56 Kbps Internet connection (broadband required for webcam support)



SMART Meeting Pro Premium software

With SMART Meeting Pro Premium software, you can

- Write notes in digital ink, annotate over documents and applications, and save everything to a single file
- Access enhanced tools such as lines, shapes, text conversion and content capture
- Work and share files over multiple connected interactive displays

Accomplish more in meetings with SMART Meeting Pro Premium software. This interactive whiteboard application enables you to write notes in digital ink, annotate over documents and web applications and save everything to a single file. With SMART Meeting Pro Premium, you can connect multiple interactive displays in your meeting room, and the content you display can be shared between them. The software also has enhanced tools, such as lines, shapes, text conversion and content capture.

Save notes and save time

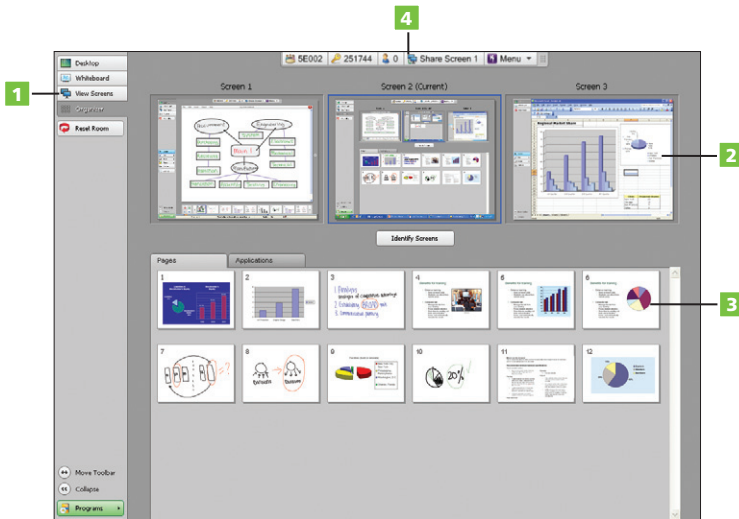
SMART Meeting Pro Premium software enables you to write in digital ink and save everything from marked-up pages to screen captures as a single PDF, PPT or image file. You can also write over files in programs such as Microsoft Word, Excel, PowerPoint, as well as AutoCAD and Adobe Acrobat, and save your work in the native format – complete with digital markups. And when the meeting is finished, you can e-mail it to your team.

Discover enhanced whiteboarding tools

With SMART Meeting Pro Premium software, you have access to powerful interactive whiteboarding tools, such as shapes and lines, that allow you to effortlessly create process flow diagrams and organizational charts. You can also change handwritten notes to text using the text conversion tool. The software also features a screen capture tool, which enables you to capture content from a document or website and paste it into your SMART Meeting Pro Premium page.

Share information with ease

SMART Meeting Pro Premium gives you the ability to show pages on multiple connected interactive displays – and then share and move information easily between them. And SMART Meeting Pro Premium is configured for SMART Bridgit conferencing software. With the purchase of SMART Bridgit server software, you and your teams can enjoy data conferencing and unparalleled collaboration.



- 1 SMART business toolbar – Switch between desktop, interactive whiteboarding and organizer modes.
- 2 Multiple displays support – Move content between other connected displays.
- 3 Organizer – Sort interactive whiteboard pages before sending the file to colleagues.
- 4 Integrated data conferencing – Enable room-to-room connections or include local or remote meeting participants with the purchase of SMART Bridgit server software.

Key features

Write notes

Write notes in digital ink over documents, then capture and save your notes for distribution and later reference.

Save function

Take screen captures of your documents and applications to include in your notes. Save all your notes as a single PDF, PPT or image file and e-mail them directly to colleagues.

Application integration

Write in digital ink in Microsoft Word, Excel and PowerPoint files, as well as AutoCAD and Adobe Acrobat files. Save all marked-up documents in their native formats.

Interactive whiteboarding features

Create interactive whiteboard pages, and easily move from page to page. Access features such as shapes, lines, text, undo and redo, resize and rotate. You can also change object properties and convert handwriting to text.

Multiple display support

Connect up to 16 interactive displays to your meeting room computer.

Organizer mode

View all interactive whiteboard pages, and sort them by dragging, inserting or deleting pages.

Keyboard integration

SMART Meeting Pro Premium software works with the On-Screen Keyboard or your system's wireless keyboard and mouse.

E-mail notes

Quickly distribute all notes and action items by e-mailing them from within the software.

Reset room

End the meeting, exit the session and close any open applications. The meeting room can be readied for the next meeting in one step.

Technical requirements

For systems with 1 or 2 interactive displays

Hardware
 2 GHz Intel® Pentium® 4 dual-core processor (quad-core recommended) • 2 GB of RAM (4 GB recommended) • 1 GB of free hard disk space for minimum installation (additional free space required during installation) • 10 Mbps network connection (100 Mbps recommended) supporting TCP/IP • Video cards or motherboard video hardware supporting one or two displays, as needed • Video card support for Microsoft DirectX® application programming interface 9
 • Available powered USB or serial ports for your SMART products

Software

Windows XP Service Pack 3 or Windows Vista operating system • Microsoft DirectX 9 (later version recommended) • Microsoft Internet Explorer® Internet browser 6 • Adobe Reader® 5 (later version recommended)

For systems with 3–16 interactive displays

Hardware
 2.4 GHz Intel Pentium 4 dual-core processor
 • 4 GB of RAM • 1 GB of free hard disk space for minimum installation (additional free space required during installation) • 10 Mbps network connection (100 Mbps recommended) supporting TCP/IP • Multidisplay video cards supporting Microsoft DirectX 9 • Available powered USB or serial ports for your SMART products

Software

Windows XP Service Pack 3 or Windows Vista operating system (**NOTE:** Windows Vista users should disable Microsoft Aero® desktop experience)
 • Microsoft DirectX 9 (later version recommended)
 • Microsoft Internet Explorer

One step away from integrated data conferencing

With the purchase of SMART Bridgit server software, you can enjoy room-to-room conferencing or connect with local or remote meeting participants. Learn more at smarttech.com/meetingpropremium.



SMART support

An overview

The dedication we put into our product development is echoed in our support programs – from knowledge databases to implementation services.

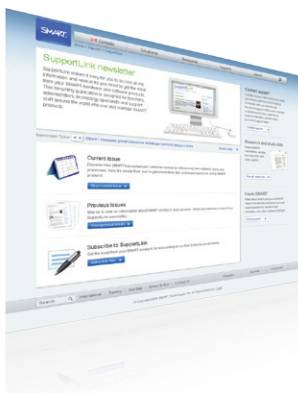
The best of customer and technical support

To ensure the ongoing success of your technology implementation, we work with our extensive network of resellers to provide technical support. With the help of our resellers, we can offer support in every major city in North America. So our customers have quick access to the information and assistance they need, whenever they need it.

From our online database of product and technical information to our toll-free telephone service to our extended product warranties, we help business people everywhere use our products to their fullest potential.

Our customer service system offers a variety of ways to quickly find information and support. It is designed to suit the many needs of our customers and includes the following:

- An online self-serve database of over 1,000 documents, including how-to instructions, technical information and product information – available around the clock
- More than 100 customer service representatives, available toll free via telephone and online chat, 13 hours a day
- Support over e-mail 24 hours a day
- A desktop-sharing option that lets us guide you through your solution
- Training for your IT staff to provide effective, on-site technical support



The details

Product warranty

With SMART, you can be confident that we stand behind our products. We offer a three-year warranty on most products. And, if you register your SMART Board 600 series interactive whiteboard within three months of purchase, the warranty is extended to five years.

Product update tool

As a SMART customer, you'll automatically receive information on product updates and notifications. It's our way of ensuring that you stay informed about any developments that can help you maximize the benefits of your SMART products. Our product update tool automatically notifies you when an upgrade is available and guides you through the upgrade process. It also installs and uninstalls software components for you, as required.

Global reseller network

SMART's broad channel of resellers offers top-notch customer service and sales support in over 175 countries around the world. These knowledgeable professionals can offer advice on which SMART solution is best suited to address your business requirements, and they can help design an implementation plan that meets your specific needs.

SMART administrator toolkit

We offer a digital toolkit that gives you an easy way to manage your SMART software network installations and monitor network computers. You can centralize the installation of your SMART software and then manage and update the software from your server.

Spare parts program

To simplify and expedite repairs on SMART products, we supply customers who are planning large implementations with an inventory of commonly requested spare parts. The program allows you to maintain your products without losing time on ordering and shipping.



BT adapts to a new phase of globalization

Collaborative solutions from SMART playing a pivotal role



“The successful delivery of a customer solution relies upon the effective collaboration between people across BT. Our new SMART collaboration capability enables people to meet, regardless of where they are in the world, and interact as if they were in the same room. This has had a massive impact on travel costs and reduced our carbon footprint significantly. Last week I trained 34 people in India from Adastral Park and yesterday I trained a further eight – that’s a saving of a flight to India, plus my time, in just two weeks.”

Bola Oshisanwo, director,
Agile Development Centre

Globalization has redefined the modern economy; it offers growth and opportunity but also demands a new way of working. As a company that serves customers in more than 170 countries, BT recognizes that it must improve business agility to generate efficiencies and improve operational and environmental performance. To

achieve this, BT Innovate & Design (BTID) has embarked on a Global Development Centre (GDC) Programme that embeds collaborative solutions from SMART Technologies.

Central to BT’s growth ambitions BTID is responsible for building all the systems and networks used by BT. These systems are built by end to end project teams that have adopted the agile development methodology. Collectively these teams are responsible for development that enables BT to drive towards its strategic goal of being ‘Number One for Customer Service’.

The adoption of agile development practices requires a new type of environment, especially as the teams are geographically dispersed across the UK, India, China, USA and Central Europe. BTID realized that it needed a new environment where both layout and technology supports agile delivery.

“The idea was influenced by information from Google, Gartner Group and Microsoft, as well as research into understanding how people actually collaborate. We also researched interactive environments that are conducive to dynamic and positive decision-making. We knew some form of telepresence was required and evaluated a range of technologies and software, all of which supported some of our vision,” says Bola Oshisanwo, director, Agile Development Centre. “Our developers tend to work in groups around a white board and research revealed that they want to interact with and see what their colleagues are writing on the boards, and not their faces. At that point we knew our solution must support this way of working while connecting teams that are spread across multiple locations.”

“BT’s research culminated in the complete redesign of the agile development teams working environment and included the adoption of SMART Technologies’ collaborative solution. It started with a proof of concept at Adastral Park, BT’s centre for development in Ipswich. The initial pilot project was conceived and implemented within five months, involving 200 people and 17 SMART Board interactive whiteboards at Adastral Park, one interactive whiteboard each in Belfast and Glasgow, and two interactive whiteboards in India. End to end development teams were selected to occupy the new space. Desks were arranged so that people on chairs could easily slide between them, monitors were placed on swivel arms, and each team of 12 has its own interactive whiteboard, circular meeting table, and IP video and audio conferencing capabilities.

“People were wowed by the SMART Board interactive whiteboards initially but quickly snapped back into old habits,” says Bola. “It became clear that this was because they didn’t understand the capability of the technology, so we designed a training package which was delivered to a critical mass of people over a short period of time. The training was based on observing what people did day-to-day. The training focused on helping the team to incorporate the interactive whiteboard and collaborative working into their day-to-day work.”

The proof of concept was so successful, BT Innovate & Design set up a programme to manage the deployment of the solution to five Agile Development Centres worldwide. The next stage of the project has seen deployment of the solution to Dallas, Adastral Park, BTID’s



“Ultimately we’re using this technology to change and transform the culture of the company,” explains Alan Bateman, the Director for Next Generation Engineering “What started as a project at Adastral Park has led to plans for a network of five global development centres worldwide, all adopting the same blueprint and specifically designed to accelerate and improve the quality of our development.” He concludes, “BT is dedicated to helping customers thrive in a changing world. We understand the power of technology to achieve this and believe SMART Technologies has a pivotal role to play.”

Alan Bateman, director,
Next Generation Engineering

headquarters in London and to Pune in India, enabling a further 700 people to work more effectively.

Bola comments: “The successful delivery of a customer solution relies upon the effective collaboration between people across BT. Our new SMART collaboration capability enables people to meet, regardless of where they are in the world and interact as if they were in the same room. This has had a massive impact on travel costs and reduced our carbon footprint significantly. Last week I trained 34 people in India from Adastral Park and yesterday I trained a further eight – that’s a saving of a flight to India, plus my time, in just two weeks.”

In another instance, by using the new SMART collaboration tools, a group of five developers were able to resolve a problem within two days rather than travel to India for five days.

This has clear implications for people satisfaction, staff retention and work life balance, as well as reducing travel costs and carbon footprint.

“Ultimately we’re using this technology to change and transform the culture of the company,” explains Alan Bateman, the director for Next Generation Engineering. “What started as a project at Adastral Park has led to plans for a network of five global development centres worldwide, all adopting the same blueprint and all specifically designed to accelerate and improve the quality of our development.” He concludes, “BT is dedicated to helping customers thrive in a changing world. We understand the power of technology to achieve this and believe SMART Technologies has a pivotal role to play.”

SMART's collaboration solutions enable O2 to work better, connected



"We can set up a conference in less than three minutes and SMART's collaboration technology fits perfectly with our mantras of "walk up and use" and "three touches and go" – it really is that simple."

Alan Parkin, programme manager, infrastructure design and delivery, O2

With 29,000 employees across the group servicing 45.8 million fixed and mobile customers across Europe, O2 combines sophisticated voice and data products that help people get more out of their lives. SMART's collaboration technology provides O2 with much the same benefit, translating into more time, less travel and reduced costs. Uniting disparate teams and enabling them to collaborate effectively regardless of location, SMART's technology wholly supports O2's ethos that "we're better, connected."

The challenge

O2's business case is built around realizing efficiencies, improving time to market and reducing costs for the business. The company has multiple offices throughout the UK and headquarters in Slough where it also has two other offices. With frequent travel between the Slough and Leeds locations, the company realized their set-up had to change.

"We decided to amalgamate the three Slough offices into one location accommodating 2,200 people," explains Alan Parkin, programme manager, infrastructure design and delivery. "We recognized that uniting disparate teams and improving inter-departmental collaboration was central to delivering an outstanding customer experience, and that the infrastructure to support this would be critical to our success."

Previously, all meeting rooms contained a conference phone and flip chart, but projectors had to be booked through reception and a great deal of time was wasted simply 'setting up'. With only 47 meeting rooms - half the number previously available - the new Slough site demanded a more productive and

collaborative working environment. A smooth and timely transition between meetings would be essential to ensure that the new office would have the meeting room capacity to support operational needs.

The solution

O2 decided to investigate interactive technologies. The decision was taken to trial SMART Technologies' collaboration solutions and five SMART Board interactive whiteboards were installed across the Leeds and Slough sites. SMART Bridgit conferencing software was also installed, which allows people in any location to join a data conference, use touch screen commands, write in digital ink over any application, generate and integrate data, share desktops, and write and save notes immediately.

"We can set up a conference in less than three minutes and SMART's collaboration technology fits perfectly with our mantras of "walk up and use" and "three touches and go," says Parkin. "It really is that simple."

The pilot was so successful that almost all of the 47 meeting rooms in the new Slough office will have SMART Board interactive whiteboards and the boardroom will have two SMART Podium interactive pen displays. Every floor will also have one or more interactive whiteboards in 'Our Space' areas for impromptu meetings. Road shows are planned to demonstrate the capabilities of the technology and designated "shapers" from each directorate will cascade output from monthly meetings. User-guide booklets and a self-help intranet portal have also been developed to help staff get the most from the new technology.



“The reduction in travel, time and associated costs is quite staggering. The senior team has gained a day a month in time and, as no one has to travel, the overall productivity of the team is greatly enhanced. It’s a win-win situation for everyone.”

Alan Parkin, programme manager, infrastructure design and delivery, O2

The results

It has been estimated that if 25 percent of O2 staff used SMART solutions to conduct meetings, the company could save up to £15,000 a week. The savings would be realized through reduced travel between their Leeds and Slough offices.

Parkin’s own infrastructure design and delivery team of more than 30 people use SMART’s technology to generate significant efficiencies from their monthly meetings. Previously, meetings had to take place on two separate days - one in the North and one in the South - with presenters travelling to both meetings and team members to their respective areas. These meetings are now conducted in one day, involving the entire team simultaneously via Bridgit conferencing software and the interactive whiteboard.

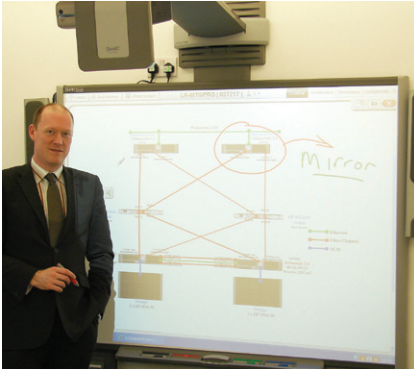
“The reduction in travel, time and associated costs is quite staggering,” says Parkin. “The senior team has gained a day a month in time and, as no one has to travel, the overall productivity of the team is greatly enhanced. It’s a win-win situation for everyone.”

Location is no longer a barrier to collaboration and a similar pattern is being adopted by teams across the O2 business. For three weeks, one project team of eight people had been trying to meet to approve a design spec but diaries simply would not coordinate. Using SMART’s collaboration solutions between Leeds and Slough, the work was completed within half an hour, saving time and money, and enabling the team to complete the project three months ahead of schedule.

The future

“The impact of SMART’s collaboration technology has been so significant that we plan to install SMART’s interactive whiteboards in our Leeds, Bury, Preston Brook and Glasgow call centres, as well as rolling it out to offices across the UK,” concludes Parkin. “Our training department also recognizes the potential to train staff using the interactive whiteboards, reducing travel and costs while improving productivity. I have no doubt that embracing SMART’s technology to drive change in our meeting and training culture will prove transformational for the O2 business.”

SMART's business solutions enable Cundall's distributed teams to work together



“SMART’s interactive technology is helping to facilitate cultural change within our organization. It is allowing our workforce to collaborate quickly and easily on projects.”

David Dryden,
managing partner, Cundall

Cundall is a global built environment engineering design company and an award winning, industry leader in the design of environmentally friendly sustainable buildings. Established in 1976, Cundall has grown into a £30 million turnover company, with a workforce of over 500 spread across five UK sites, and offices in 16 countries around the world. Cundall uses SMART Technologies’ interactive solutions to enable distributed teams to work collaboratively, wherever they are in the world, ultimately allowing the organization to effectively respond to opportunities offered by today’s global marketplace.

Global platform

Cundall wanted to transition from a modular office space environment to a global platform that could respond to business anywhere in the world, from anywhere in the world, making the company more competitive and cost effective. To achieve this goal, it was critical that the organization work together as one entity to satisfy global demand and unifying appropriate resources to provide best-in-class consultancy.

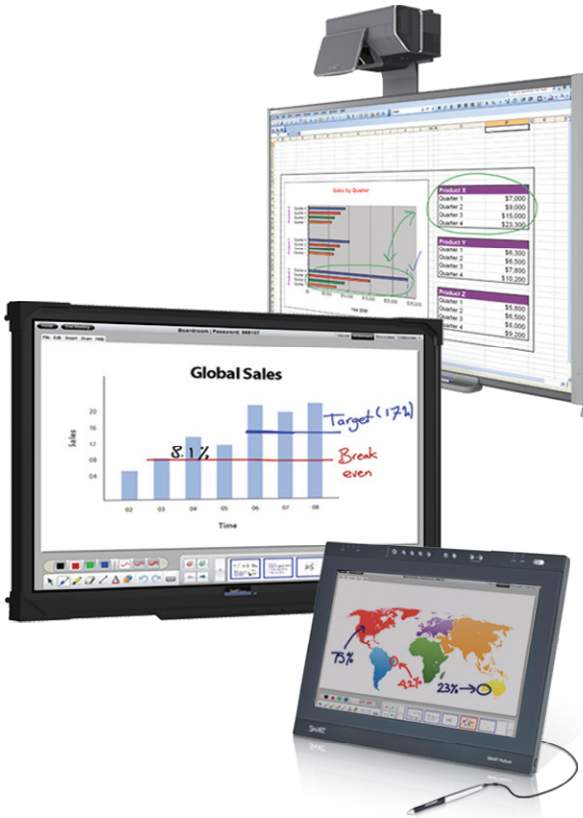
“We recognized that for us to realize the full potential of the global marketplace, it was imperative to combat the silo mentality that is so common in an organization of this size,” explained David Dryden, Cundall’s managing partner. “Every project is unique, and to ensure that the outcome of any design matches the client’s vision in terms of function, efficiency and visual impact, it is critical that we draw on the design, experience and knowledge from all our team members, wherever they are in the world. Why limit ourselves to the resource in one particular office or region?”

As a company focused on creating sustainable buildings, Cundall’s mandate was to find a solution that had a positive impact on the environment. Video conferencing was used extensively in the past, but the functional and interactive limitations became increasingly constraining. IT Director, Jonathan Taylor, was tasked with developing and improving the company’s unified global communications package to extend the video conferencing capability and VOIP (voice over internet protocol). Dryden noticed SMART Board interactive whiteboards on a visit to the Deutsche Bank and saw the benefits for Cundall. He asked Taylor to investigate.

The business solution

Initially, it was decided to run a pilot project with SMART Board interactive whiteboards and SMART Bridgit conferencing software in the meeting rooms of Cundall’s London and Newcastle offices. Since the initial implementation, the IT team has installed interactive whiteboards across all five UK sites, running parallel with video conferencing systems.

Explains Taylor, “When I was asked to research SMART’s interactive whiteboards, I soon realized that the ‘whiteboard’ term is wholly unrepresentative of SMART’s technology – used to its full potential, there is nothing to match it in the marketplace. SMART’s business solution makes real-time data conferencing possible by enabling teams to instantly start or join a conference independent of their location, share information and desktops.”



“Matching the pace of global business and managing challenging market conditions requires us to achieve a seemingly disparate set of goals; decrease costs, reduce travel, realize efficiencies, improve communication, condense project timelines and maximize resources. I have no doubt that the adoption of SMART’s business solution will be instrumental in helping Cundall succeed and reach our goals.”

David Dryden,
managing partner

As an engineering company, drawings are the bedrock of the Cundall workforce. Using the SMART solution, engineers in multiple locations can view, discuss, amend and manipulate the same engineering drawings in real time, reducing the amount of time it takes to achieve a final, agreed version. Through collaboration, this new way of working has increased productivity and reduced company travel and associated costs, while providing significant financial benefits in today’s economic climate.

“We want to build an engineering consultancy that is internationally recognized and respected for our work in improving the built environment – physically and socially. Creating sustainable solutions for clients necessitates keeping our own house in order. By using SMART’s business solution we have been able to spread our reach while reducing company

travel, and play a role in helping save the environment by reducing our carbon footprint as well as our client’s.”

Results

Cundall plans to use SMART’s collaborative technology to connect all international sites when it completes an extension planned for its global-wide area network. Whereas previously the communication infrastructure allowed people to communicate with voice and video, they are now able to incorporate application and data sharing too, achieving a more collaborative working environment that facilitates faster and better decision making.

“SMART’s interactive technology is helping to facilitate cultural change within our organization. It is allowing our workforce to collaborate quickly and easily on projects and alleviating the silo mentality that we know will act

as a barrier to future security,” explains Dryden. “A great spin-off benefit has been the ability to allow experienced staff at Cundall to mentor others around the world aiding rapid skills spread.”

“Matching the pace of global business and managing challenging market conditions requires us to achieve a seemingly disparate set of goals; decrease costs, reduce travel, realize efficiencies, improve communication, condense project timelines and maximize resources. I have no doubt that the adoption of SMART’s business solution will be instrumental in helping Cundall succeed and reach our goals.”

To find out more, visit smarttech.com.

Contact SMART Technologies

SMART Technologies Corporation
1655 North Fort Myer Drive, Suite 1120
Arlington, VA 22209
USA

Phone 1.703.516.7627
Toll Free 1.866.766.6927
Fax 1.703.351.1113
dcinfo@smarttech.com
smarttech.com

SMART[™]

Extraordinary made simple[™]